

VIVOTEK

A Delta Group Company

PRODUCT BROCHURE

One Platform. Hybrid Power. Total Control





Image source: Archimedes Mandap

Making Society's Most Trusted Intelligent Security Systems

Established in 2000 and operating as a key subsidiary of Delta Group since 2017, VIVOTEK is a leading global provider of comprehensive security solutions. We deliver a complete security ecosystem built on AI innovation, robust R&D, and a steadfast commitment to quality and sustainability.

Global Strength, Local Commitment

Operating in 120+ countries with 200+ distribution partners and 100+ strategic alliances, VIVOTEK combines global presence with localized support to meet every industry's needs.

Sustainability and Trust

Certified with ISO, NDAA, and RE100, we uphold the highest standards of quality, cybersecurity, and environmental responsibility.

Empowering Intelligent Security, From Edge to Cloud

VIVOTEK deliver trusted, reliable, and scalable security through our Hybrid Ecosystem of Edge AI cameras, VAST Security Station (VSS), and VORTEX Cloud.

Innovation and Excellence

Driven by in-house R&D and supported by Delta's resources, we advance edge AI, image enhancement, and cloud integration for smarter, more efficient surveillance.

The Hybrid Ecosystem

VIVOTEK's integrated security portfolio is built to be scalable, reliable, and intelligent-delivering real-time decision-making and efficient resource management across all major verticals.

Built on Trust. Secured by Design

At VIVOTEK, reliability begins at the foundation - every device, connection, and cloud service is designed with security at its core. Our end-to-end protection ensures that your data, devices, and operations remain safe, compliant, and always available.

Device-to-Cloud Protection for Unmatched Reliability

Management System



ISO 9001:2015 ISO 14001:2015



ISO 14064-1:2018 ISO 50001



Intellectual Property

Cybersecurity



ISO 27001 FIPS 140-2 level 2



Trend Micro IoT Security

Corporate Sustainability



ISO 14064-1:2018 CE



EU WEEE Directive RoHS

Compliance & Certifications



NDAA Compliant TAA Compliant



PSTI AWS

One Platform. Hybrid Power. Total Control

VIVOTEK's hybrid architecture unites on-premise resilience with cloud intelligence. Through a single, unified platform, you can manage every device, site, and event with confidence-anytime, anywhere.

Seamless Management in Control

- A single interface for all cameras, NVRs, and connected devices.
- Stay updated, agile, and always in control.

Flexible Path to the Cloud

- Move at your pace - keep NVRs or go fully cloud.
- Hybrid freedom, zero disruption.



Simplified IT, Stronger Security

- Remote device and firmware control with enterprise-grade protection.
- Less maintenance, more uptime.

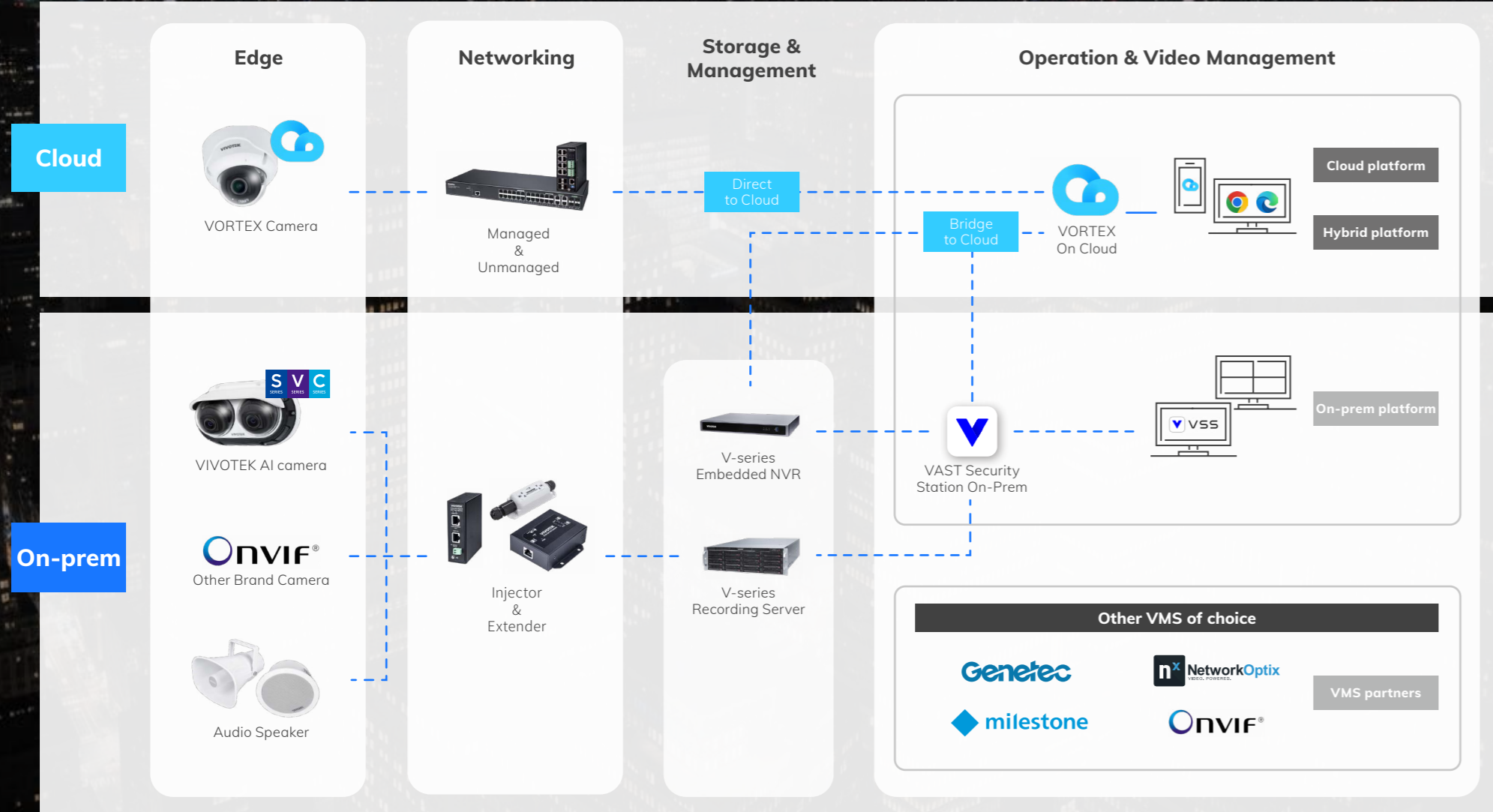
AI-Powered Intelligence Everywhere

- Edge and cloud AI for instant alerts, Think Search, Fall, and PPE Detection.
- Smarter insights. Faster action.

Built on Delta's reliability and VIVOTEK's innovation - evolve from one site to a global network with total confidence.

The Power Behind One Platform

VIVOTEK's Hybrid architecture that connects edge, network, and cloud - seamlessly



See Smarter . Identify More

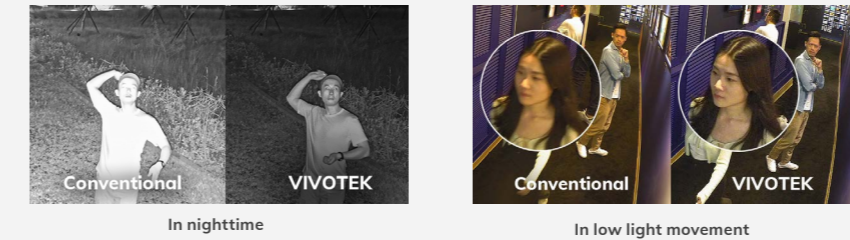
Imaging and AI technologies form the core of our innovation, enabling clearer visuals and detailed insights

See Clarity That Drives Confidence

RealSight Engine

True-to-life clarity and color accuracy in all conditions

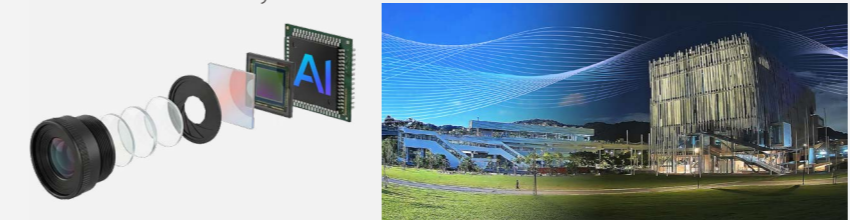
RealSight Engine leverages AI to deliver unmatched visibility and true-to-life colors, even in challenging environments. It preserves critical details without complex setup - never miss what matters.



Chroma24

Unveils the night in true color

Chroma24 redefines low-light surveillance by delivering vivid color imaging in ultra-low-light environments - without relying on supplemental lighting. It ensures accurate color reproduction, clearer motion details, and clean, dependable imaging for reliable 24/7 visibility.



Identify Intelligence That Knows What Matters

Object & Attribute Detection

Identifies people, vehicles, and key visual attributes

Object-of-interest

VIVOTEK AI cameras runs powerful algorithm that accurately detects and classifies people and vehicles while ignoring traditional motion movements.

Appearance Attribute

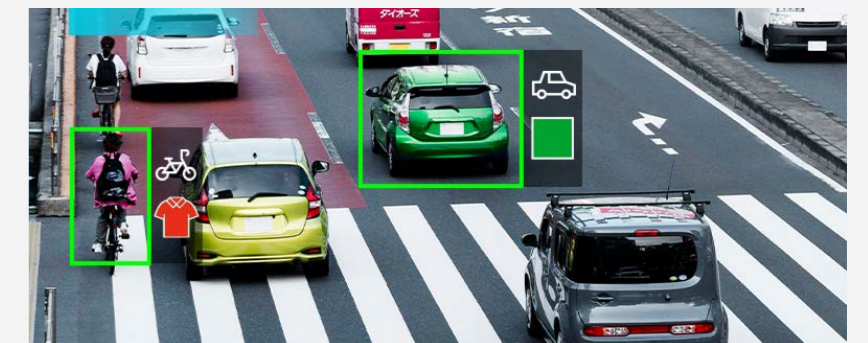
Real-time analytics extract attributes like color and vehicle type, enhancing video search accuracy and offering valuable insights for business intelligence integration.

Facial Attribute

Facial attribute extraction enables advanced video search with precise facial matches, elevating accuracy and efficiency in identifying individuals within surveillance footage.

License Plate Number

Effortlessly track and identify plates without the need for third-party integration.



Detect Instantly . Search Faster

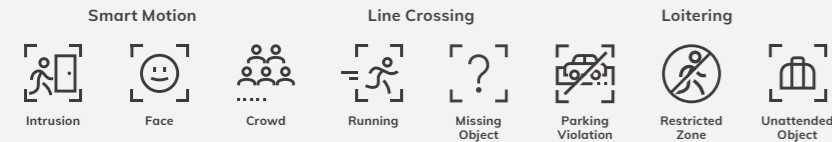
Accurate detection and precise searching across the entire hybrid surveillance ecosystem

Detect Automation That Protects & Accelerates Operations

Smart VCA

AI-powered video analytics on edge

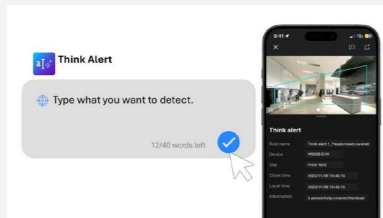
Powered by cutting-edge deep learning technology, our advanced algorithm consistently elevates detection accuracy by significantly reducing false alarms. With the unparalleled capabilities of deep learning, surveillance systems can distinguish real threats from non-threatening events, resulting in security and operational efficiency.



Think Alerts

Customizable alerts tailored to every scenario

Enables proactive security by detecting custom threats in real-time. Simply describe what to monitor, receive instant notifications when detected, and prevent incidents before damage occurs.

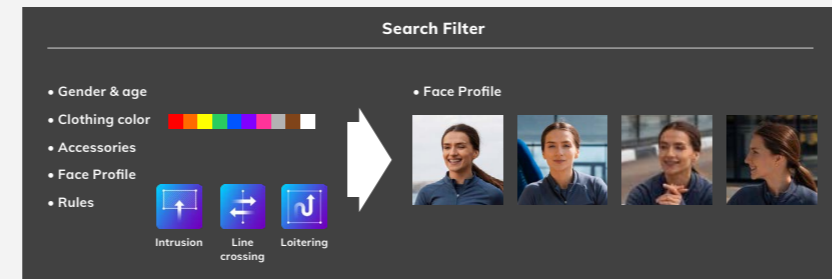


Search Intelligence That Finds The Targets Easily

Deep Search - Find What You Already Know

Attribute-based filtering for precise evidence refinement

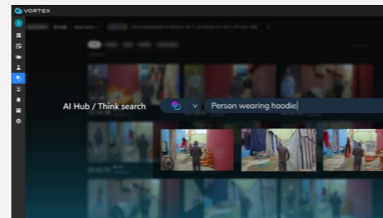
Transform surveillance system with Deep Search, saves the time and effort by quickly locating people and vehicles using attributes, trajectories, and even similar appearances. Deep Search brings the convenience of finding what you need with ease.



Think Search - Find What You Type

Natural-language video search that understands

Type exactly what you're thinking to locate events instantly. Powered by natural language processing, it streamlines the search process, boosts efficiency, and delivers results through a simple, intuitive interface.



Operational Intelligence in Action

AI-powered automation that delivers real-time response, coordinates cameras, and accelerates investigations

Automate Intervention

Smart Audio Response

Enhances situational awareness with audio integration

Trigger instant audio warnings or live microphone broadcasts the moment an event occurs. Deter threats remotely, resolve incidents faster, and protect your team - all through seamless, automated intervention.

Benefits

- Avoid confrontation or danger of physical contact
- Warn remotely and immediately on-the-spot



Automate Tracking

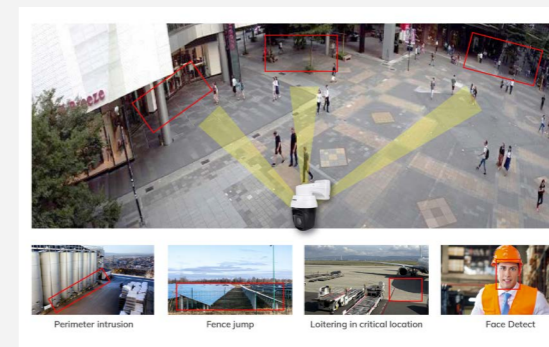
PTZ Auto-Tracking

Protects wide coverage with PTZ features

Secure wide coverage with auto-tracking, PTZ patrol and Smart Tracking Advanced. Set multiple VCA rules to identify abnormal behavior, protect sensitive zones, and follow targets with enhanced detail, ensuring efficient & intelligent surveillance.

Smart Tracking Advanced

- Intrusion detection
- Line crossing detection
- Loitering detection
- Face detection



Automate Investigations

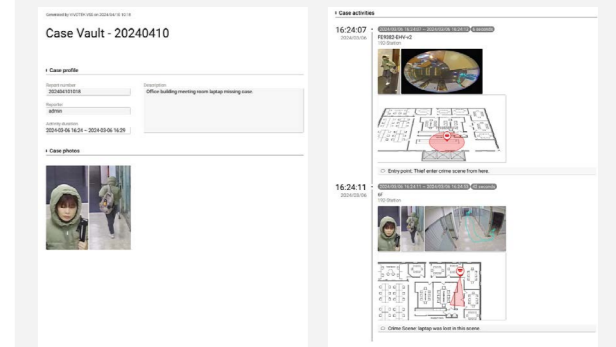
Case Vault

Organizes and exports incident files for faster reporting

Case Vault organizes the clips and export detailed report straight from your search results. This feature makes case management easier, simplifying the process of collecting and sharing key information with stakeholders.

Key elements

- Organize event clips
- Timeline report
- Export video clips and PDF documents



Easy Installation. Effortless Deployment

Products and services designed for quick and mass deployment

Designed for Easy Installation

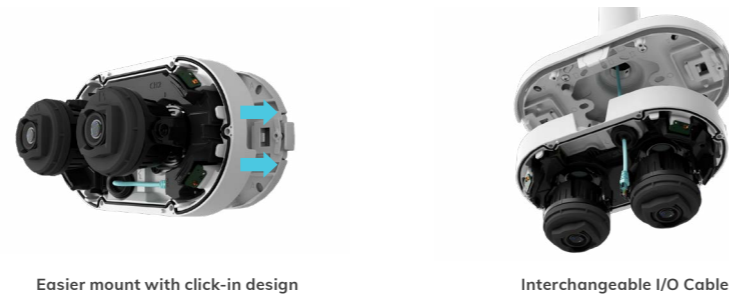
Modular Mechanical Design

VIVOTEK's brand new mechanical design has made the installation process easier than ever before. The new modular design greatly reduces installation times and costs, allowing installers to take on more projects.



Simple Installation

The V-series Multi-Directional Panoramic AI Camera offers easy installation with a click-in mount and interchangeable I/O cable, ensuring seamless integration into your surveillance system.

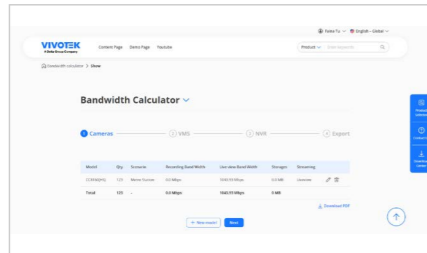


Design Tools

IPVS Design Tool



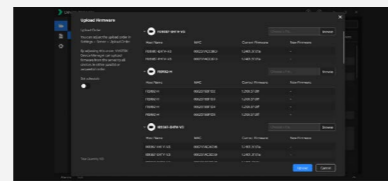
Bandwidth Design Tool



Device Manager

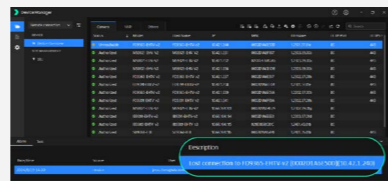
Batch Deployment

- Assign static IP address
- Batch parameter configuration
- Create templates
- Upload firmware



Remote Maintenance

- Device status monitoring and alerts
- Gateway to one service portal



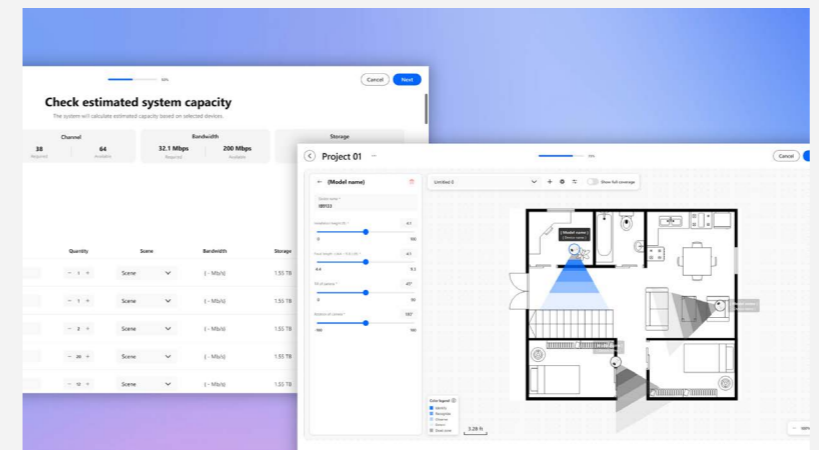
Partner Empowerment: VPP Portal

Empower Your Business with Unified Project Design and Maintenance - All in One Portal

Project Design

Handle All Planning Tasks in One Seamless Workflow

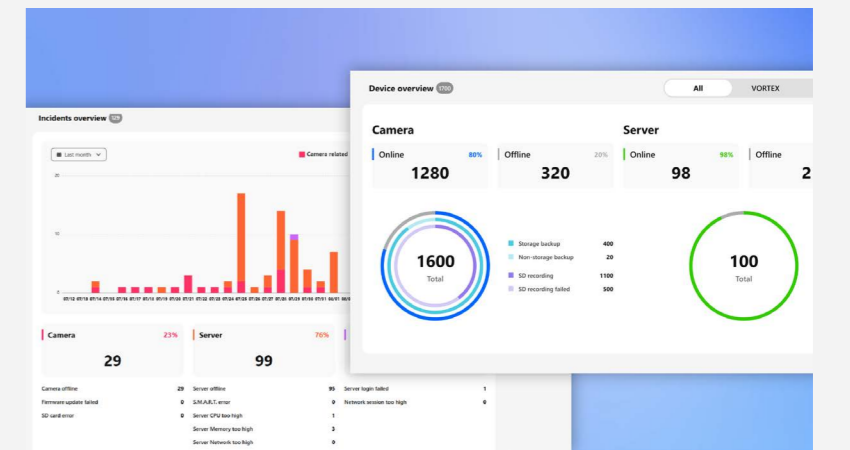
- Design projects without additional software
- Validate coverage and blind spots visually
- Estimate bandwidth and storage accurately
- Export product lists for proposals













Customer Maintenance

Stay Connected and in Control from Anywhere

- Stay informed with real time system visibility
- Respond to issues before customers notice
- Manage devices remotely with confidence
- Reduce on-site visits and response time




Network Camera Portfolio

Camera Type	VIVOTEK On-premise Cameras	VORTEX Cloud-native Cameras
Dome & Bullet Situational awareness with best-in-class AI	Entry level commercial  2MP/5MP Entry-level	Essential series  2M/5MP Fixed Dome & Bullet
Turret Camera See every detail in true color, 24/7	Enterprise and project  5MP/4K, in/outdoor AI camera	Premium series  2M/5MP Fixed Dome & Bullet
Panoramic & Fisheye One camera that replaces many	 5MP Fisheye, 2MP 180° Compact	 5MP Fixed AI camera
PTZ Smarter patrol with AI Object tracking	 4MP Chroma24 AI camera, 4M/5MP/4K, Fixed/Remote AI camera	 5MP/4K, Fixed/Remote AI camera
Application Camera Build to satisfy specific scenario	Onboard Security  Saloon Camera, Exterior Camera, Mobile NVR	Specialized Application  Thermal camera, License plate capture kit, License plate recognition camera, Corner dome camera, Modular camera, Counting camera

Powering Every Vision with AI and Cloud Synergy

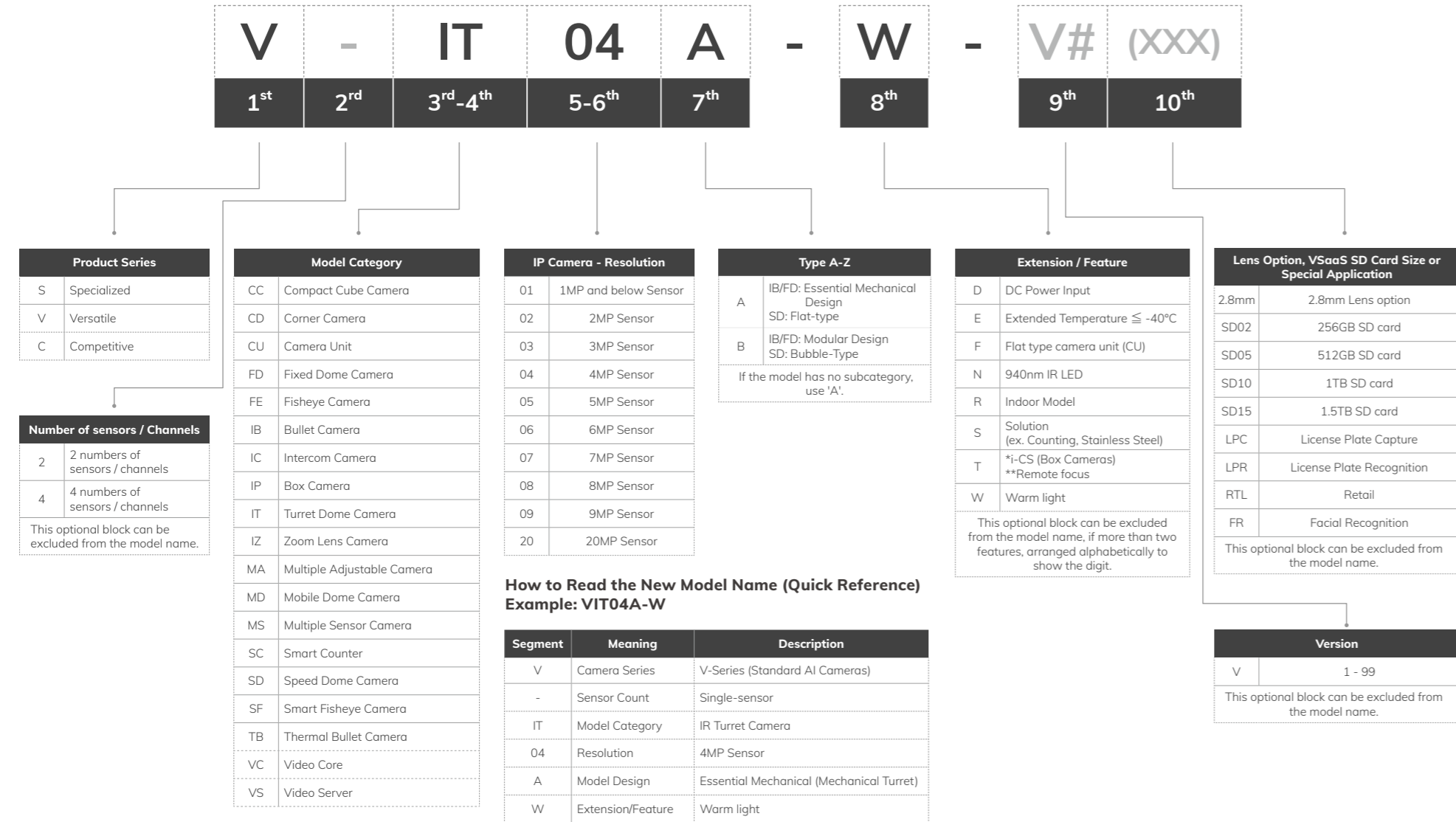
VIVOTEK's camera portfolio combines precision imaging, scalable intelligence, and seamless cloud integration



Series	Positioning
 C Series (Competitive)	Cost-effective AI designed for essential, everyday security needs, affordable and easy to deploy.
 V Series (Versatile)	Professional-grade AI cameras for mission-critical surveillance, high quality day and night (Large Sensor, P-Iris, dual-light) with rugged design.
 S Series (Specialized)	Purpose-built cameras for specialized environments requiring counting, LPR, thermal, or facial recognition.
 Cloud Native Series	Direct-to-cloud cameras built for scalable hybrid and full cloud deployments, auto updates and future ready.

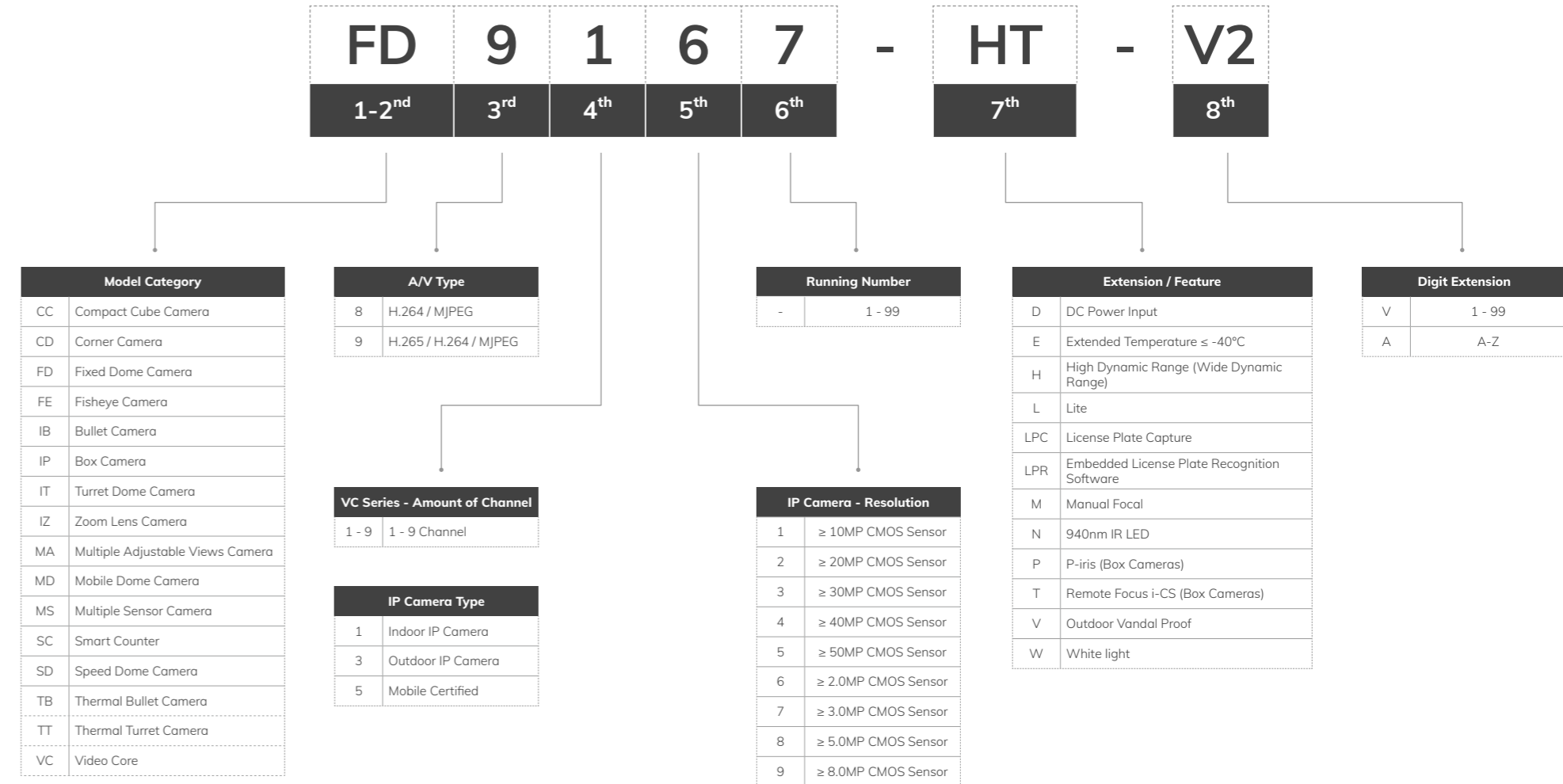
Network Cameras Naming Rule

New, Effective 2026



Network Cameras Naming Rule

Previous, Before 2026



*All existing models and existing inventory will retain their current naming without modification.

Indoor Dome



FD9186-H



FD9182-H



FD9167-HT-V2



FD9187-HT-V3 (2.7-13.5 mm)

Type	C-series Entry-level Network Camera		V-series Modular AI Camera	
Camera Features				
Image Sensor	1/2.7" Progressive CMOS	1/2.7" Progressive CMOS	1/2.8" Progressive CMOS	1/2.8" Progressive CMOS
Max. Resolution	2880x1616 (5MP)	2560x1920 (5MP)	1920x1080 (2MP)	2560x1920 (5MP)
Focal Length	f = 2.8 mm	f = 2.8 mm	f = 2.7 ~ 13.5 mm	f = 2.7 ~ 13.5 mm
Field of View	111.0° (H) 59.0° (V) 133.0° (D)	103° (H) 76° (V) 134° (D)	110° ~ 33° (H) 55° ~ 18° (V) 126° ~ 37° (D)	100.1° ~ 29.9° (H) 71.8° ~ 22.4° (V) 135.2° ~ 37.4° (D)
WDR	WDR Pro	WDR Pro	WDR Pro	WDR Pro
IR Distance	30m	-	50m	50m
Minimum Illumination	0.055 lux @ F1.6 (Color) 0.005 lux @ F1.6 (B/W) 0 lux with IR illumination on	0.03 lux @ F2.0 (Color) <0.005 lux @ F2.0 (B/W)	0.035 lux @ F1.4 (Color)(30IRE) 0.080 lux @ F1.4 (Color)(50IRE) <0.005 lux @ F1.4 (B/W) 0 lux with IR illumination on	0.04 lux @ F1.8 (Color) <0.005 lux @ F1.8 (B/W) 0 lux with IR illumination on
Video/ Audio/ Network				
Video Compression Codec	H.265, H.264, MJPEG	H.265, H.264, MJPEG	H.265, H.264, MJPEG	H.265, H.264, MJPEG
Maximum Frame Rate	30 fps @ 2880x1616	20 fps @ 2560x1920	30 fps @ 1920x1080 (WDR Pro on) 60 fps @ 1920x1080 (WDR Pro off)	30 fps @ 2560x1920 (WDR Pro on) 30 fps @ 2560x1440 (WDR Pro on) 60 fps @ 1920x1080 (WDR Pro off)
Built-in Mic	V	V	-	V
ONVIF	Profile G, S, T	Profile G, S, T	Profile G, S, T	Profile G, S, T, M
AI Analytics				
Smart VCA	V	-	V	V
Object Detection (People)	V	-	V	V
Object Detection (Vehicle)	V	-	V	V
Attribute Extraction	-	-	-	V
Object Detection (Re-Search)	-	-	-	V
General				
Power Consumption	PoE: Max. 5.4 W DC 12V: Max. 6.5W	PoE: Max. 3.6W	Max. 9/6 W (IR on/off) DC 12V: Max. 9/6 W (IR on/off) AC 24V*: Max. 9/6 W (IR on/off) *Requires extension I/O module kit	12.95W/ 10.05W (IR on/off) DC 12V: Max. 14.4W/ 11.5W (IR on/off) AC 24V*: Max. 12W/ 9.1W (IR on/off) *Requires extension I/O module kit
Operating Temperature	-10 °C ~ 55°C	-10 °C ~ 50°C	-10 °C ~ 50°C	-10 °C ~ 50°C
Certifications				
IP66	-	-	-	-
IP67	-	-	-	-
IK10	-	V	-	-
IK10+	-	-	-	-
NEMA 4X	-	-	-	-

Indoor Dome



FD9187-HT-V3 (7-22 mm)



FD9189-H-V3



FD9199-H

Type	V-series Modular AI Camera	V-series AI Camera	
Camera Features			
Image Sensor	1/2.8" Progressive CMOS	1/2.8" Progressive CMOS	1/1.8" Progressive CMOS
Max. Resolution	2560x1920 (5MP)	2560x1920 (5MP)	3840x2160 (8MP)
Focal Length	f = 7 ~ 22 mm	f = 2.8 mm	f = 4.2 mm
Field of View	39.3° ~ 15.5° (H) 28.8° ~ 11.6° (V) 50.8° ~ 19.4° (D)	103.4° (H) 75.3° (V) 135.2° (D)	110.7° (H) 59.1° (V) 131.0° (D)
WDR	WDR Pro	WDR Pro	WDR Pro
IR Distance	50m	30m	30m
Minimum Illumination	0.035 lux @ F1.7 (Color) <0.005 lux @ F1.7 (B/W) 0 lux with IR illumination on	0.055 lux @ F2.0 (Color) 0.005 lux @ F2.0 (B/W) 0 lux with IR illumination on	0.015 lux @ F1.6 (Color) <0.005 lux @ F1.6 (B/W) 0 lux with IR illumination on
Video/ Audio/ Network			
Video Compression Codec	H.265, H.264, MJPEG	H.265, H.264, MJPEG	H.265, H.264, MJPEG
Maximum Frame Rate	30 fps @ 2560x1920 (WDR Pro on) 30 fps @ 2560x1440 (WDR Pro on) 60 fps @ 1920x1080 (WDR Pro off)	30 fps @ 2560x1920 (5MP)	30 fps @ 3840x2160 (8MP)
Built-in Mic	V	V	V
ONVIF	Profile G, S, T, M	Profile G, S, T, M	Profile G, S, T, M
AI Analytics			
Smart VCA	V	V	V
Object Detection (People)	V	V	V
Object Detection (Vehicle)	V	V	V
Attribute Extraction	V	V	V
Object Detection (Re-Search)	V	V	V
General			
Power Consumption	12.95W/ 10.05W (IR on/off) DC 12V: Max. 14.4W/ 11.5W (IR on/off) AC 24V*: Max. 12W/ 9.1W (IR on/off) *Requires extension I/O module kit	Max. 12.4W/ 9.6W (IR on/off)	Max. 12.4W/ 9.6W (IR on/off)
Operating Temperature	-10 °C ~ 50°C	0 °C ~ 45°C	0 °C ~ 45°C
Certifications			
IP66	-	-	-
IP67	-	-	-
IK10	-	-	-
IK10+	-	-	-
NEMA 4X	-	-	-

Outdoor Dome



Model Name	FD9366-HV(2.8mm)	FD9366-HV(3.6mm)	FD9368-HTV	FD9369	FD9380-HTV-V2
Type	C-series Entry-level Network Camera				
Camera Features					
Image Sensor	1/2.9" Progressive CMOS	1/2.9" Progressive CMOS	1/2.9" Progressive CMOS	1/3.1" Progressive CMOS	1/2.7" Progressive CMOS
Max. Resolution	1920x1080 (2MP)	1920x1080 (2MP)	1920x1080 (2MP)	1920x1080 (2MP)	2880x1616 (5MP)
Focal Length	f = 2.8 mm	f = 3.6 mm	f = 2.8 ~ 12mm	f = 2.8 mm	f = 2.7 ~ 13.5mm
Field of View	108° (H) 60° (V) 124° (D)	89° (H) 47° (V) 105° (D)	93° ~ 32° (H) 50° ~ 18° (V) 110° ~ 37° (D)	116° (H) 65° (V) 140° (D)	111.0° ~ 32.2° (H) 57.0° ~ 18.0° (V) 136.0° ~ 37.0° (D)
WDR	WDR Pro	WDR Pro	WDR Pro	WDR Enhanced	WDR Pro
IR Distance	20m	20m	30m	30m	30m
Minimum Illumination	0.13 lux @ F1.8 (Color) < 0.01 lux @ F1.8 (B/W) 0 lux with IR illumination on	0.15 lux @ F2.0 (Color) < 0.01 lux @ F2.0 (B/W) 0 lux with IR illumination on	0.055 lux @ F1.4 (Color) <0.005 lux @ F1.4 (B/W) 0 lux with IR illumination on	0.08 lux @ F2.0 (Color) <0.005 lux @ F2.0 (B/W) 0 lux with IR illumination on	0.04 lux @ F1.6 (Color) 0.005 lux @ F1.6 (B/W) 0 lux with IR illumination on
Video/ Audio/ Network					
Video Compression Codec	H.265, H.264, MJPEG	H.265, H.264, MJPEG	H.265, H.264, MJPEG	H.265, H.264, MJPEG	H.265, H.264, MJPEG
Maximum Frame Rate	30 fps @ 1920x1080	30 fps @ 1920x1080	30 fps @ 1920x1080	30 fps @ 1920x1080	30 fps @ 2880x1616
Built-in Mic	V	V	V	V	V
ONVIF	Profile G, S, T	Profile G, S, T	Profile G, S, T	Profile G, S, T	Profile G, S, T
AI Analytics					
Smart VCA	-	-	-	-	V
Object Detection (People)	-	-	-	-	V
Object Detection (Vehicle)	-	-	-	-	V
Attribute Extraction	-	-	-	-	-
Object Detection (Re-Search)	-	-	-	-	-
General					
Power Consumption	Max. 5.5 W/3.3 W (IR on/off)	Max. 5.5 W/3.3 W (IR on/off)	Max. 12.95 W/9 W (IR on/off)	Max. 6W/4W (IR on/off) DC 12V: Max. 5.1W/3.4W (IR on/off)	PoE: Max. 7.8W DC 12V: Max. 7.4W
Operating Temperature	-25 °C ~ 60°C	-25 °C ~ 60°C	-30 °C ~ 60°C	-30 °C ~ 55°C	-30 °C ~ 60°C
Certifications					
IP66	V	V	V	V	V
IP67	-	-	-	-	V
IK10	V	V	V	V	V
IK10+	-	-	-	-	-
NEMA 4X	-	-	-	-	-

Outdoor Dome



Model Name	FD9380-HV-V2	NEW FD9390-HV-V2	FD9383-HTV	FD9383-HV (2.8 mm)	FD9383-HV (3.6 mm)
Type	C-series Entry-level Network Camera		V-series AI Camera		
Camera Features					
Image Sensor	1/2.7" Progressive CMOS	1/2.7" Progressive CMOS	1/2.8" Progressive CMOS	1/2.8" Progressive CMOS	1/2.8" Progressive CMOS
Max. Resolution	2880x1616 (5MP)	3840x2160 (8MP)	2560x1920 (5MP)	2560x1920 (5MP)	2560x1920 (5MP)
Focal Length	f = 2.8 mm	f = 2.8 mm	f = 2.8 ~ 12mm	f = 2.8 mm	f = 3.6 mm
Field of View	111.0° (H) 59.0° (V) 133.0° (D)	111.0° (H) 59.0° (V) 133.0° (D)	95.4° ~ 28.7° (H) 68.8° ~ 21.5° (V) 129.6° ~ 35.9° (D)	103.4° (H) 75.3° (V) 135.2° (D)	79.6° (H) 57.8° (V) 105.8° (D)
WDR	WDR Pro	WDR Pro	WDR Pro	WDR Pro	WDR Pro
IR Distance	30m	30	30m	30m	30m
Minimum Illumination	0.055 lux @ F1.6 (Color) 0.005 lux @ F1.6 (B/W) 0 lux with IR illumination on	0.055 lux @ F2.0 (Color) 0.005 lux @ F2.0 (B/W) 0 lux with IR illumination on	0.04 lux @ F1.6 (Color) 0.005 lux @ F1.6 (B/W) 0 lux with IR illumination on	0.055 lux @ F2.0 (Color) 0.005 lux @ F2.0 (B/W) 0 lux with IR illumination on	0.055 lux @ F2.0 (Color) 0.005 lux @ F2.0 (B/W) 0 lux with IR illumination on
Video/ Audio/ Network					
Video Compression Codec	H.265, H.264, MJPEG	H.265, H.264, MJPEG	H.265, H.264, MJPEG	H.265, H.264, MJPEG	H.265, H.264, MJPEG
Maximum Frame Rate	30 fps @ 2880x1616	15 fps @ 3840x2160	30 fps @ 2560x1920	30 fps @ 2560x1920	30 fps @ 2560x1920
Built-in Mic	-	V	V	-	-
ONVIF	Profile G, S, T	Profile G, S, T	Profile G, S, T, M	Profile G, S, T, M	Profile G, S, T, M
AI Analytics					
Smart VCA	V	V	V	V	V
Object Detection (People)	V	V	V	V	V
Object Detection (Vehicle)	V	V	V	V	V
Attribute Extraction	-	-	V	V	V
Object Detection (Re-Search)	-	-	V	V	V
General					
Power Consumption	PoE: Max. 6.4W DC 12V: Max. 6.2W	PoE: Max. 6.5W DC 12V: Max. 6.6W	Max. 9.7 W/ 7.2 W (IR on/off)	Max. 8.5 W/ 6.0 W (IR on/off)	Max. 8.5 W/ 6.0 W (IR on/off)
Operating Temperature	-30 °C ~ 60°C	-30 °C ~ 60°C	-30 °C ~ 55°C	-30 °C ~ 55°C	-30 °C ~ 55°C
Certifications					
IP66	V	V	V	V	V
IP67	V	V	-	-	-
IK10	V	V	V	V	V
IK10+	-	-	-	-	-
NEMA 4X	-	-	-	-	-

Outdoor Dome



Model Name	FD9365-EHTV-V2	FD9367-EHTV-V2	FD9387-EHTV-V3 (2.7-13.5 mm)	FD9387-EHTV-V3 (7-22 mm)	FD9391-EHTV-V2
Type	V-series Modular AI Camera				
Camera Features					
Image Sensor	1/2" Progressive CMOS	1/2.8" Progressive CMOS	1/2.8" Progressive CMOS	1/2.8" Progressive CMOS	1/1.8" Progressive CMOS
Max. Resolution	1920x1080 (2MP)	1920x1080 (2MP)	2560x1920 (5MP)	2560x1920 (5MP)	3840x2160 (8MP)
Focal Length	f = 4 ~ 9 mm (f = 2.8 ~ 11.4 mm, equivalent focal length @ 1/2.8")	f = 2.7 ~ 13.5 mm	f = 2.7 ~ 13.5 mm	f = 7 ~ 22 mm	f = 4.4 ~ 10.2 mm (f = 2.8~10.3mm, equivalent focal length @ 1/2.8")
Field of View	120° ~ 46° (H) 60° ~ 26° (V) 148° ~ 53° (D)	110° ~ 33° (H) 55° ~ 18° (V) 126° ~ 37° (D)	100.1° ~ 29.9° (H) 71.8° ~ 22.4° (V) 135.2° ~ 37.4° (D)	39.3° ~ 15.5° (H) 28.8° ~ 11.6° (V) 50.8° ~ 19.4° (D)	110° ~ 43° (H) 57° ~ 24° (V) 133° ~ 49° (D)
WDR	WDR Pro II	WDR Pro	WDR Pro	WDR Pro	WDR Pro
IR Distance	50m	50m	50m	50m	50m
Minimum Illumination	0.040 lux @ F1.3 (Color), 50IRE 0.015 lux @ F1.3 (Color), 30IRE <0.005 lux @ F1.3 (B/W) 0 lux with IR illumination on	0.035 lux @ F1.4 (Color)(30IRE) 0.080 lux @ F1.4 (Color)(50IRE) <0.005 lux @ F1.4 (B/W) 0 lux with IR illumination on	0.04 lux @ F1.8 (Color) <0.005 lux @ F1.8 (B/W) 0 lux with IR illumination on	0.035 lux @ F1.7 (Color) <0.005 lux @ F1.7 (B/W) 0 lux with IR illumination on	0.01 lux @ F1.38 (Color) <0.005 lux @ F1.38 (B/W) 0 lux with IR illumination on
Video/ Audio/ Network					
Video Compression Codec	H.265, H.264, MJPEG	H.265, H.264, MJPEG	H.265, H.264, MJPEG	H.265, H.264, MJPEG	H.265, H.264, MJPEG
Maximum Frame Rate	60 fps @ 1920x1080	30 fps @ 1920x1080 (WDR Pro on) 60 fps @ 1920x1080 (WDR Pro off)	30 fps @ 2560x1920 (WDR Pro on) 30 fps @ 2560x1440 (WDR Pro on) 60 fps @ 1920x1080 (WDR Pro off)	30 fps @ 2560x1920 (WDR Pro on) 30 fps @ 2560x1440 (WDR Pro on) 60 fps @ 1920x1080 (WDR Pro off)	30 fps @ 3840x2160
Built-in Mic	√	√	√	√	√
ONVIF	Profile G, S, T, M	Profile G, S, T	Profile G, S, T, M	Profile G, S, T, M	Profile G, S, T, M
AI Analytics					
Smart VCA	√	√	√	√	√
Object Detection (People)	√	√	√	√	√
Object Detection (Vehicle)	√	√	√	√	√
Attribute Extraction	√	-	√	√	√
Object Detection (Re-Search)	√	-	√	√	√
General					
Power Consumption	PoE: 13.11/9.67 W (IR on/off) DC 12V: 14.00/10.56 W (IR on/off) AC 24V: 10.79/7.35 W (IR on/off)	PoE: Max. 9/6 W (IR on/off) DC 12V: Max. 9/6 W (IR on/off) AC 24V*: Max. 9/6 W (IR on/off) *Requires extension I/O module kit	PoE: 12.95W/ 10.05W (IR on/off) DC 12V: Max. 14.4W/ 11.5W (IR on/off) AC 24V*: Max. 12W/ 9.1W (IR on/off) *Requires extension I/O module kit	PoE: 12.95W/ 10.05W (IR on/off) DC 12V: Max. 14.4W/ 11.5W (IR on/off) AC 24V*: Max. 12W/ 9.1W (IR on/off) *Requires extension I/O module kit	PoE: 14.25/10.81 W (IR on/off) DC 12V: 14.40/10.96 W (IR on/off) AC 24V: 11.64/8.20 W (IR on/off)
Operating Temperature	-50 °C ~ 60°C	-40 °C ~ 60°C	-40 °C ~ 60°C	-40 °C ~ 60°C	-50 °C ~ 60°C
Certifications					
IP66	√	√	√	√	√
IP67	√	√	√	√	√
IK10	-	√	-	-	-
IK10+	√	-	√	√	√
NEMA 4X	√	√	√	√	√

Outdoor Dome



Model Name	FD9389-EHTV-V3	FD9389-EHV-V3	FD9399-EHTV	FD9399-EHV
Type	V-series AI Camera			
Camera Features				
Image Sensor	1/2.8" Progressive CMOS	1/2.8" Progressive CMOS	1/1.8" Progressive CMOS	1/1.8" Progressive CMOS
Max. Resolution	2560x1920 (5MP)	2560x1920 (5MP)	3840x2160 (8MP)	3840x2160 (8MP)
Focal Length	f = 2.8~12 mm	f = 2.8 mm	f = 4.3~9.8mm	f = 4.2 mm
Field of View	95.4° ~ 28.7° (H) 68.8° ~ 21.5° (V) 129.6° ~ 35.9°(D)	103.4° (H) 75.3° (V) 135.2° (D)	110.4° ~ 45.1° (H) 57.9° ~ 25.4° (V) 133.9° ~ 51.8°(D)	110.74° (H) 59.1° (V) 131.0° (D)
WDR	WDR Pro	WDR Pro	WDR Pro	WDR Pro
IR Distance	40m	40m	40m	40m
Minimum Illumination	0.04 lux @ F1.6 (Color) 0.005 lux @ F1.6 (B/W) 0 lux with IR illumination on	0.055 lux @ F2.0 (Color) 0.005 lux @ F2.0 (B/W) 0 lux with IR illumination on	0.02 lux @ F1.6 (Color) <0.005 lux @ F1.6 (B/W) 0 lux with IR illumination on	0.015 lux @ F1.6 (Color) <0.005 lux @ F1.6 (B/W) 0 lux with IR illumination on
Video/ Audio/ Network				
Video Compression Codec	H.265, H.264, MJPEG	H.265, H.264, MJPEG	H.265, H.264, MJPEG	H.265, H.264, MJPEG
Maximum Frame Rate	30 fps @ 2560x1920 (5MP)	30 fps @ 2560x1920 (5MP)	30 fps @ 3840x2160 (8MP)	30 fps @ 3840x2160 (8MP)
Built-in Mic	√	√	√	√
ONVIF	Profile G, S, T, M	Profile G, S, T, M	Profile G, S, T, M	Profile G, S, T, M
AI Analytics				
Smart VCA	√	√	√	√
Object Detection (People)	√	√	√	√
Object Detection (Vehicle)	√	√	√	√
Attribute Extraction	√	√	√	√
Object Detection (Re-Search)	√	√	√	√
General				
Power Consumption	Max. 12.4W/ 9.6W (IR on/off)	Max. 12.4W/ 9.6W (IR on/off)	Max. 12.4W/ 9.6W (IR on/off)	Max. 12.4W/ 9.6W (IR on/off)
Operating Temperature	-35 °C ~ 60°C	-35 °C ~ 60°C	-35 °C ~ 60°C	-35 °C ~ 60°C
Certifications				
IP66	√	√	√	√
IP67	-	-	-	-
IK10	√	√	√	√
IK10+	-	-	-	-
NEMA 4X	√	√	√	√

Bullet



Model Name	IB9368-HT	IB9369 (2.8 mm)	IB9369 (3.6 mm)	IB9380-HV-V2	IB9380-HTV-V2
Type	C-series Entry-level Network Camera				
Camera Features					
Image Sensor	1/2.9" Progressive CMOS	1/3.1" Progressive CMOS	1/3.1" Progressive CMOS	1/2.7" Progressive CMOS	1/2.7" Progressive CMOS
Max. Resolution	1920x1080 (2MP)	1920x1080 (2MP)	1920x1080 (2MP)	2880x1616 (5MP)	2880x1616 (5MP)
Focal Length	f = 2.8 ~ 12mm	f=2.8mm	f=3.6mm	f = 2.8 mm	f = 2.7 ~ 13.5mm
Field of View	93° ~ 32° (H) 50° ~ 18° (V) 110° ~ 37° (D)	118° (H) 65° (V) 140° (D)	90° (H) 49° (V) 106° (D)	111.0° (H) 59.0° (V) 133.0° (D)	111.0° ~ 32.2° (H) 57.0° ~ 18.0° (V) 136.0° ~ 37.0° (D)
WDR	WDR Pro	WDR Enhanced	WDR Enhanced	WDR Pro	WDR Pro
IR Distance	30m	30m	30m	30m	30m
Minimum Illumination	0.055 lux @ F1.4 (Color) <0.005 lux @ F1.4 (B/W) 0 lux with IR illumination on	0.08 lux @ F2.0 (Color) <0.005 lux @ F2.0 (B/W) 0 lux with IR illumination on	0.1 lux @ F2.2 (Color) <0.005 lux @ F2.2 (B/W) 0 lux with IR illumination on	0.055 lux @ F1.6 (Color) 0.005 lux @ F1.6 (B/W) 0 lux with IR illumination on	0.04 lux @ F1.6 (Color) 0.005 lux @ F1.6 (B/W) 0 lux with IR illumination on
Video/ Audio/ Network					
Video Compression Codec	H.265, H.264, MJPEG	H.265, H.264, MJPEG	H.265, H.264, MJPEG	H.265, H.264, MJPEG	H.265, H.264, MJPEG
Maximum Frame Rate	30 fps @ 1920x1080	30 fps @ 1920x1080	30 fps @ 1920x1080	30 fps @ 2880x1616	30 fps @ 2880x1616
Built-in Mic	-	-	-	V	V
ONVIF	Profile G, S, T	Profile G, S, T	Profile G, S, T	Profile G, S, T	Profile G, S, T
AI Analytics					
Smart VCA	-	-	-	V	V
Object Detection (People)	-	-	-	V	V
Object Detection (Vehicle)	-	-	-	V	V
Attribute Extraction	-	-	-	-	-
Object Detection (Re-Search)	-	-	-	-	-
General					
Power Consumption	Max. 12.95 W/9 W (IR on/off)	Max. 6W/4W (IR on/off) DC 12V: Max. 5.1W/3.4W (IR on/off)	Max. 6W/4W (IR on/off) DC 12V: Max. 5.1W/3.4W (IR on/off)	PoE: Max. 6.4W DC 12V: Max. 6.2W	PoE: Max. 7.8W DC 12V: Max. 7.4W
Operating Temperature	-30 °C ~ 60°C	-30 °C ~ 55°C	-30 °C ~ 55°C	-30 °C ~ 60°C	-30 °C ~ 60°C
Certifications					
IP66	V	V	V	V	V
IP67	-	-	-	V	V
IK10	V	V	V	V	V
IK10+	-	-	-	-	-
NEMA 4X	-	-	-	-	-

Bullet



Model Name	NEW IB9390-HV-V2	IB9365-EHTV-V2	IB9367-EHT-V2 (2.7-13.5 mm)	IB9367-EHT-V2 (5-50 mm)
Type	V-series Modular AI Camera			
Camera Features				
Image Sensor	1/2.7" Progressive CMOS	1/2" Progressive CMOS	1/2.8" Progressive CMOS	1/2.8" Progressive CMOS
Max. Resolution	3840x2160 (8MP)	1920x1080 (2MP)	1920x1080 (2MP)	1920x1080 (2MP)
Focal Length	f = 2.8 mm	f = 4 ~ 9 mm (f = 3.5 ~ 11.4 mm, equivalent focal length @ 1/2.8")	f = 2.7 ~ 13.5 mm	f = 5 ~ 50 mm
Field of View	111.0° (H) 59.0° (V) 133.0° (D)	100° ~ 46° (H) 52° ~ 26° (V) 120° ~ 53° (D)	105° ~ 33° (H) 55° ~ 18° (V) 126° ~ 37° (D)	47° ~ 8° (H) 26° ~ 5° (V) 55° ~ 9° (D)
WDR	WDR Pro	WDR Pro II	WDR Pro	WDR Pro
IR Distance	30	50m	50m	100m
Minimum Illumination	0.055 lux @ F2.0 (Color) 0.005 lux @ F2.0 (B/W) 0 lux with IR illumination on	0.040 lux @ F1.3 (Color), 50IRE 0.015 lux @ F1.3 (Color), 30IRE <0.005 lux @ F1.3 (B/W) 0 lux with IR illumination on	0.035 lux @ F1.4 (Color)(30IRE) 0.080 lux @ F1.4 (Color)(50IRE) <0.005 lux @ F1.4 (B/W) 0 lux with IR illumination on	0.040 lux @ F2.0 (Color)(30IRE) 0.085 lux @ F2.0 (Color)(50IRE) <0.005 lux @ F2.0 (B/W) 0 lux with IR illumination on
Video/ Audio/ Network				
Video Compression Codec	H.265, H.264, MJPEG	H.265, H.264, MJPEG	H.265, H.264, MJPEG	H.265, H.264, MJPEG
Maximum Frame Rate	15 fps @ 3840x2160	60 fps @ 1920x1080	30 fps @ 1920x1080 (WDR Pro on) 60 fps @ 1920x1080 (WDR Pro off)	30 fps @ 1920x1080 (WDR Pro on) 60 fps @ 1920x1080 (WDR Pro off)
Built-in Mic	V	-	-	-
ONVIF	Profile G, S, T	Profile G, S, T, M	Profile G, S, T	Profile G, S, T
AI Analytics				
Smart VCA	V	V	V	V
Object Detection (People)	V	V	V	V
Object Detection (Vehicle)	V	V	V	V
Attribute Extraction	-	V	-	-
Object Detection (Re-Search)	-	V	-	-
General				
Power Consumption	PoE: Max. 6.5W DC 12V: Max. 6.6W	PoE: 22.23/18.65 W (IR on/off) DC 12V: 17.28/13.70 W (IR on/off) AC 24V: 18.26/14.68 W (IR on/off)	PoE: Max. 10.77/7.77 W (IR on/off) DC 12V: Max. 9.24/6.24 W (IR on/off) AC 24V*: Max. 10.3/7.3 W (IR on/off) *Requires extension I/O module kit	PoE: Max. 10.77/7.77 W (IR on/off) DC 12V: Max. 9.24/6.24 W (IR on/off) AC 24V*: Max. 10.3/7.3 W (IR on/off) *Requires extension I/O module kit
Operating Temperature	-30 °C ~ 60°C	-50 °C ~ 60°C	-40 °C ~ 60°C	-40 °C ~ 60°C
Certifications				
IP66	V	V	V	V
IP67	V	V	V	V
IK10	V	V	V	V
IK10+	-	-	-	-
NEMA 4X	-	V	V	V

Bullet



Model Name	IB9387-EHTV-V3 (2.7-13.5 mm)	IB9387-EHTV-V3 (7-22 mm)	IB9387-EHTV-V3 (12-40 mm)	IB9391-EHTV-V2	IB9383-HTV	
Type	V-series Modular AI Camera				V-series AI Camera	
Camera Features						
Image Sensor	1/2.8" Progressive CMOS	1/2.8" Progressive CMOS	1/2.8" Progressive CMOS	1/1.8" Progressive CMOS	1/2.8" Progressive CMOS	
Max. Resolution	2560x1920 (5MP)	2560x1920 (5MP)	2560x1920 (5MP)	3840x2160 (8MP)	2560x1920 (5MP)	
Focal Length	f = 2.7 ~ 13.5 mm	f = 7 ~ 22 mm	f = 12 ~ 40 mm	f = 4.4 ~ 10.2 mm (f = 3.2~10.3mm, equivalent focal length @ 1/2.8")	f = 2.8 ~ 12mm	
Field of View	100.1° ~ 29.9° (H) 71.8° ~ 22.4° (V) 135.2° ~ 37.4° (D)	39.3° ~ 15.5° (H) 28.8° ~ 11.6° (V) 50.8° ~ 19.4° (D)	24.2° ~ 8.3° (H) 18° ~ 6.3° (V) 30.5° ~ 10.4° (D)	100° ~ 43° (H) 50° ~ 24° (V) 110° ~ 49° (D)	95.4° ~ 28.7° (H) 68.8° ~ 21.5° (V) 129.6° ~ 35.9°(D)	
WDR	WDR Pro	WDR Pro	WDR Pro	WDR Pro	WDR Pro	
IR Distance	50m	50m	100m	50m	30m	
Minimum Illumination	0.04 lux @ F1.8 (Color) <0.005 lux @ F1.8 (B/W) 0 lux with IR illumination on	0.035 lux @ F1.7 (Color) <0.005 lux @ F1.7 (B/W) 0 lux with IR illumination on	0.075 lux @ F2.2 (Color) <0.005 lux @ F2.2 (B/W) 0 lux with IR illumination on	0.01 lux @ F1.38 (Color) <0.005 lux @ F1.38 (B/W) 0 lux with IR illumination on	0.04 lux @ F1.6 (Color) 0.005 lux @ F1.6 (B/W) 0 lux with IR illumination on	
Video/ Audio/ Network						
Video Compression Codec	H.265, H.264, MJPEG	H.265, H.264, MJPEG	H.265, H.264, MJPEG	H.265, H.264, MJPEG	H.265, H.264, MJPEG	
Maximum Frame Rate	30 fps @ 2560x1920 (WDR Pro on) 30 fps @ 2560x1440 (WDR Pro on) 60 fps @ 1920x1080 (WDR Pro off)	30 fps @ 2560x1920 (WDR Pro on) 30 fps @ 2560x1440 (WDR Pro on) 60 fps @ 1920x1080 (WDR Pro off)	30 fps @ 2560x1920 (WDR Pro on) 30 fps @ 2560x1440 (WDR Pro on) 60 fps @ 1920x1080 (WDR Pro off)	30 fps @ 3840x2160	30 fps @ 2560x1920	
Built-in Mic	-	-	-	-	V	
ONVIF	Profile G, S, T, M	Profile G, S, T, M	Profile G, S, T, M	Profile G, S, T, M	Profile G, S, T, M	
AI Analytics						
Smart VCA	V	V	V	V	V	
Object Detection (People)	V	V	V	V	V	
Object Detection (Vehicle)	V	V	V	V	V	
Attribute Extraction	V	V	V	V	V	
Object Detection (Re-Search)	V	V	V	V	V	
General						
Power Consumption	PoE: Max. 12.95W/ 10.55W (IR on/off) DC 12V: Max. 14.4W/ 12.0W (IR on/off) AC 24V*: Max. 12W/ 9.6W (IR on/off)	PoE: Max. 12.95W/ 10.55W (IR on/off) DC 12V: Max. 14.4W/ 12.0W (IR on/off) AC 24V*: Max. 12W/ 9.6W (IR on/off)	PoE: Max. 12.95W/ 10.55W (IR on/off) DC 12V: Max. 14.4W/ 12.0W (IR on/off) AC 24V*: Max. 12W/ 9.6W (IR on/off)	PoE: 19.38/15.80 W (IR on/off) DC 12V: Max. 14.4W/ 12.0W (IR on/off) AC 24V: 16.52/12.94 W (IR on/off)	Max. 12.4 W/ 8.0 W (IR on/off)	
Operating Temperature	-40 °C ~ 60°C	-40 °C ~ 60°	-40 °C ~ 60°	-50 °C ~ 60°C	-30 °C ~ 55°C	
Certifications						
IP66	V	V	V	V	V	
IP67	V	V	V	V	-	
IK10	V	V	V	V	V	
IK10+	-	-	-	-	-	
NEMA 4X	V	V	V	V	-	

Bullet



Model Name	IB9383-HV	IB9389-EHTV-V3	IB9389-EHV-V3	IB9399-EHTV	IB9399-EHV
Type	V-series AI Camera				
Camera Features					
Image Sensor	1/2.8" Progressive CMOS	1/2.8" Progressive CMOS	1/2.8" Progressive CMOS	1/1.8" Progressive CMOS	1/1.8" Progressive CMOS
Max. Resolution	2560x1920 (5MP)	2560x1920 (5MP)	2560x1920 (5MP)	3840x2160 (8MP)	3840x2160 (8MP)
Focal Length	f = 3.6 mm	f = 2.8~12 mm	f = 2.8 mm	f = 4.3~9.8mm	f = 4.2 mm
Field of View	79.6° (H) 57.8° (V) 105.8° (D)	95.4° ~ 28.7° (H) 68.8° ~ 21.5° (V) 129.6° ~ 35.9°(D)	103.4° (H) 75.3° (V) 135.2° (D)	110.4° ~ 45.1° (H) 57.9° ~ 25.4° (V) 133.9° ~ 51.8°(D)	110.74° (H) 59.1° (V) 131.0° (D)
WDR	WDR Pro	WDR Pro	WDR Pro	WDR Pro	WDR Pro
IR Distance	30m	40m	40m	40m	40m
Minimum Illumination	0.055 lux @ F2.0 (Color) 0.005 lux @ F2.0 (B/W) 0 lux with IR illumination on	0.04 lux @ F1.6 (Color) 0.005 lux @ F1.6 (B/W) 0 lux with IR illumination on	0.055 lux @ F2.0 (Color) 0.005 lux @ F2.0 (B/W) 0 lux with IR illumination on	0.02 lux @ F1.6 (Color) <0.005 lux @ F1.6 (B/W) 0 lux with IR illumination on	0.015 lux @ F1.6 (Color) <0.005 lux @ F1.6 (B/W) 0 lux with IR illumination on
Video/ Audio/ Network					
Video Compression Codec	H.265, H.264, MJPEG	H.265, H.264, MJPEG	H.265, H.264, MJPEG	H.265, H.264, MJPEG	H.265, H.264, MJPEG
Maximum Frame Rate	30 fps @ 2560x1920	30 fps @ 2560x1920 (5MP)	30 fps @ 2560x1920 (5MP)	30 fps @ 3840x2160 (8MP)	30 fps @ 3840x2160 (8MP)
Built-in Mic	V	V	V	V	V
ONVIF	Profile G, S, T, M	Profile G, S, T, M	Profile G, S, T, M	Profile G, S, T, M	Profile G, S, T, M
AI Analytics					
Smart VCA	V	V	V	V	V
Object Detection (People)	V	V	V	V	V
Object Detection (Vehicle)	V	V	V	V	V
Attribute Extraction	V	V	V	V	V
Object Detection (Re-Search)	V	V	V	V	V
General					
Power Consumption	Max. 10.6 W / 6.0 W (IR on/off)	Max. 12.4W/ 9.6W (IR on/off)	Max. 12.4W/ 9.6W (IR on/off)	Max. 12.4W/ 9.6W (IR on/off)	Max. 12.4W/ 9.6W (IR on/off)
Operating Temperature	-30 °C ~ 55°C	-35 °C ~ 60°C	-35 °C ~ 60°C	-35 °C ~ 60°C	-35 °C ~ 60°C
Certifications					
IP66	V	V	V	V	V
IP67	-	V	V	V	V
IK10	V	V	V	V	V
IK10+	-	-	-	-	-
NEMA 4X	-	-	-	-	-

Turret



Model Name	IT9380-HTV-V2	IT9380-HV-V2	NEW IT9390-HVW-V2	IT9383-HTVW	IT9383-HVW
Type	C-series Entry-level Network Camera			V-series AI Camera	
Camera Features					
Image Sensor	1/2.7" Progressive CMOS	1/2.7" Progressive CMOS	1/2.7" Progressive CMOS	1/2.8" Progressive CMOS	1/2.8" Progressive CMOS
Max. Resolution	2880x1616 (5MP)	2880x1616 (5MP)	3840x2160 (8MP)	2560x1920 (5MP)	2560x1920 (5MP)
Focal Length	f = 2.7 ~ 13.5mm	f = 2.8 mm	f = 2.8 mm	f = 2.8-12 mm	f = 2.8 mm
Field of View	111.0° ~ 32.2° (H) 57.0° ~ 18.0° (V) 136.0° ~ 37.0° (D)	111.0° (H) 59.0° (V) 133.0° (D)	111.0° (Horizontal) 59.0° (Vertical) 133.0° (Diagonal)	95.4° ~ 28.7° (H) 68.8° ~ 21.5° (V) 129.6° ~ 35.9° (D)	103.4° (H) 75.3° (V) 135.2° (D)
WDR	WDR Pro	WDR Pro	WDR Pro	WDR Pro	WDR Pro
IR Distance	30m	30m	30	30m	30m
Minimum Illumination	0.04 lux @ F1.6 (Color) 0.005 lux @ F1.6 (B/W) 0 lux with IR illumination on	0.055 lux @ F1.6 (Color) 0.005 lux @ F1.6 (B/W) 0 lux with IR illumination on	0.055 lux @ F2.0 (Color) 0.005 lux @ F2.0 (B/W) 0 lux with IR illumination on	0.04 lux @ F1.6 (Color) 0.005 lux @ F1.6 (B/W) 0 lux with IR illumination on	0.055 lux @ F2.0 (Color) 0.005 lux @ F2.0 (B/W) 0 lux with IR illumination on
Video/ Audio/ Network					
Video Compression Codec	H.265, H.264, MJPEG	H.265, H.264, MJPEG	H.265, H.264, MJPEG	H.265, H.264, MJPEG	H.265, H.264, MJPEG
Maximum Frame Rate	30 fps @ 2880x1616	30 fps @ 2880x1616	15 fps @ 3840x2160	30 fps @ 2560x1920 (5MP)	30 fps @ 2560x1920 (5MP)
Built-in Mic	√	√	√	√	√
ONVIF	Profile G, S, T	Profile G, S, T	Profile G, S, T	Profile G, S, T, M	Profile G, S, T, M
AI Analytics					
Smart VCA	√	√	√	√	√
Object Detection (People)	√	√	√	√	√
Object Detection (Vehicle)	√	√	√	√	√
Attribute Extraction	-	-	-	√	√
Object Detection (Re-Search)	-	-	-	√	√
General					
Power Consumption	PoE: Max. 8.5W DC 12V: Max. 8.4W	PoE: Max. 5.9W DC 12V: Max. 5.8W	PoE: Max. 6.3W DC 12V: Max. 6.0W	Max: 12.2W / 8.5W (IR on/off) Normal 5.5W	Max: 10.7W / 7W (IR on/off) Normal 5.5W
Operating Temperature	-30 °C ~ 60°C	-30 °C ~ 60°C	-30 °C ~ 60°C	-30 °C ~ 50°C	-30 °C ~ 50°C
Certifications					
IP66	√	√	√	√	√
IP67	√	√	√	-	-
IK10	√	√	√	√	√
IK10+	-	-	-	-	-
NEMA 4X	-	-	-	-	-

Turret



Model Name	IT9389-HTVW-V3	IT9389-HVW-V3	IT9399-HTVW	IT9399-HVW	NEW VIT04A-W
Type	V-series AI Camera				V-series Chroma24
Camera Features					
Image Sensor	1/2.8" Progressive CMOS	1/2.8" Progressive CMOS	1/1.8" Progressive CMOS	1/1.8" Progressive CMOS	1/1.8" Progressive CMOS
Max. Resolution	2560x1920 (5MP)	2560x1920 (5MP)	3840x2160 (8MP)	3840x2160 (8MP)	2688x1520 (4MP)
Focal Length	f = 2.8-12 mm	f = 2.8 mm	f = 4.3-9.8mm	f = 4.2 mm	f = 2.8 mm
Field of View	95.4° ~ 28.7° (H) 68.8° ~ 21.5° (V) 129.6° ~ 35.9° (D)	103.4° (H) 75.3° (V) 135.2° (D)	110.4° ~ 45.1° (H) 57.9° ~ 25.4° (V) 133.9° ~ 51.8° (D)	110.74° (H) 59.1° (V) 131.0° (D)	103.4° (H) 75.3° (V) 135.2° (D)
WDR	WDR Pro	WDR Pro	WDR Pro	WDR Pro	WDR Pro
IR Distance	40m	40m	40m	40m	30m
Minimum Illumination	0.04 lux @ F1.6 (Color) 0.005 lux @ F1.6 (B/W) 0 lux with IR illumination on	0.055 lux @ F2.0 (Color) 0.005 lux @ F2.0 (B/W) 0 lux with IR illumination on	0.02 lux @ F1.6 (Color) <0.005 lux @ F1.6 (B/W) 0 lux with IR illumination on	0.015 lux @ F1.6 (Color) <0.005 lux @ F1.6 (B/W) 0 lux with IR illumination on	0.003lux @ F1.0 (Color) 0 lux with IR illumination on
Video/ Audio/ Network					
Video Compression Codec	H.265, H.264, MJPEG	H.265, H.264, MJPEG	H.265, H.264, MJPEG	H.265, H.264, MJPEG	H.265, H.264, MJPEG
Maximum Frame Rate	30 fps @ 2560x1920 (5MP)	30 fps @ 2560x1920 (5MP)	30 fps @ 3840x2160 (8MP)	30 fps @ 3840x2160 (8MP)	30 fps @ 2688x1520 (4MP)
Built-in Mic	√	√	√	√	√
ONVIF	Profile G, S, T, M	Profile G, S, T, M	Profile G, S, T, M	Profile G, S, T, M	Profile G, S, T, M
AI Analytics					
Smart VCA	√	√	√	√	√
Object Detection (People)	√	√	√	√	√
Object Detection (Vehicle)	√	√	√	√	√
Attribute Extraction	√	√	√	√	√
Object Detection (Re-Search)	√	√	√	√	√
General					
Power Consumption	Max. 12.4W/ 9.6W (IR on/off)	Max. 12.4W/ 9.6W (IR on/off)	Max. 12.4W/ 9.6W (IR on/off)	Max. 12.4W/ 9.6W (IR on/off)	Max: 10.7W / 7W (IR on/off) Normal: 5.5W
Operating Temperature	-30 °C ~ 50°C	-30 °C ~ 50°C	-30 °C ~ 50°C	-30 °C ~ 50°C	-30 °C ~ 50°C
Certifications					
IP66	√	√	√	√	√
IP67	-	-	-	√	-
IK10	√	√	√	√	√
IK10+	-	-	-	-	-
NEMA 4X	-	-	-	-	-

Panoramic



FE9180-H-V2



FE9380-HV



CC9160-H

Model Name	FE9180-H-V2	FE9380-HV	CC9160-H
Type	C-series Fisheye Panoramic Camera		C-series Compact Panoramic Camera
Camera Features			
Image Sensor	1/2.7" Progressive CMOS in 2688x1944	1/2.7" Progressive CMOS in 2688x1944	1/2.8" Progressive CMOS
Max. Resolution	1920x1920	1920x1920	1920x1080 (2MP)
Focal Length	f = 1.16mm	f = 1.16mm	f = 1.66 mm
Field of View	180° (H) 180° (V) 180° (D)	180° (H) 180° (V) 180° (D)	180° (H) 100° (V) 180° (D)
WDR	WDR Pro	WDR Pro	WDR Pro
IR Distance	-	10m	-
Minimum Illumination	0.05 lux @ F2.25 (Color) <0.005 lux @ F2.25 (B/W)	0.05 lux @ F2.25 (Color) <0.005 lux @ F2.25 (B/W) 0 lux with IR illumination on	0.03 lux@F1.95
Video/ Audio/ Network			
Video Compression Codec	H.265, H.264, MJPEG	H.265, H.264, MJPEG	H.265, H.264, MJPEG
Maximum Frame Rate	24 fps @ 1920x1920 (WDR on) 30 fps @ 1920x1920 (WDR off)	24 fps @ 1920x1920 (WDR on) 30 fps @ 1920x1920 (WDR off)	30 fps @ 1920x1080
Built-in Mic	V	V	V
ONVIF	Profile G, S, T	Profile G, S, T	Profile G, S, T
AI Analytics			
Smart VCA	-	-	-
Object Detection (People)	-	-	-
Object Detection (Vehicle)	-	-	-
Attribute Extraction	-	-	-
Object Detection (Re-Search)	-	-	-
General			
Power Consumption	Max 4.6 W	Max. 12 W/3.8 W (IR on/off)	Max. 5W
Operating Temperature	-10 °C ~ 50°C	-30 °C ~ 60°C	-10 °C ~ 45°C
Certifications			
IP66	-	V	-
IP67	-	-	-
IK10	-	V	-
IK10+	-	-	-
NEMA 4X	-	-	-

Panoramic



CC9160-H(DJ)



CC9160-H(HS)



FE9191-H-V2 (1.18 mm)



FE9192-H

Model Name	CC9160-H(DJ)	CC9160-H(HS)	FE9191-H-V2 (1.18 mm)	FE9192-H
Type	C-series Compact Panoramic Camera		V-series Fisheye AI Panoramic Camera	
Camera Features				
Image Sensor	1/2.8" Progressive CMOS	1/2.8" Progressive CMOS	1/2.3" Progressive CMOS in 4056x3040	1/2.3" Progressive CMOS in 4056x3040
Max. Resolution	1920x1080 (2MP)	1920x1080 (2MP)	2816x2816	2944x2944
Focal Length	f = 1.66 mm	f = 1.66 mm	f = 1.18mm	f = 1.22mm
Field of View	180° (H) 100° (V) 180° (D)	180° (H) 100° (V) 180° (D)	180° (H) 180° (V) 180° (D)	180° (H) 180° (V) 180° (D)
WDR	WDR Pro	WDR Pro	WDR Pro	WDR Pro
IR Distance	-	-	-	-
Minimum Illumination	0.03 lux@F1.95	0.03 lux@F1.95	0.1 lux @ F2.18 (Color) <0.005 lux @ F2.18 (B/W)	0.1 lux @ F2.0 (Color) <0.005 lux @ F2.0 (B/W)
Video/ Audio/ Network				
Video Compression Codec	H.265, H.264, MJPEG	H.265, H.264, MJPEG	H.265, H.264, MJPEG	H.265, H.264, MJPEG
Maximum Frame Rate	30 fps @ 1920x1080	30 fps @ 1920x1080	30fps @ 2816x2816 (WDR off) 20fps @ 2816x2816 (WDR on)	30fps @ 2944x2944 (WDR off) 20fps @ 2944x2944 (WDR on)
Built-in Mic	-	-	V	V
ONVIF	Profile G, S, T	Profile G, S, T	Profile G, S, T, M	Profile G, S, T, M
AI Analytics				
Smart VCA	-	-	V	V
Object Detection (People)	-	-	V	V
Object Detection (Vehicle)	-	-	V	V
Attribute Extraction	-	-	V	V
Object Detection (Re-Search)	-	-	V	V
General				
Power Consumption	Max: 5W	Max. 5W	Max. 9.12 W	Max. 9 W
Operating Temperature	-10 °C ~ 45°C	-10 °C ~ 45°C	-10 °C ~ 50°C	-10 °C ~ 50°C
Certifications				
IP66	-	-	-	-
IP67	-	-	-	-
IK10	-	-	V	-
IK10+	-	-	-	-
NEMA 4X	-	-	-	-

Panoramic



Model Name	FE9382-EHV-V2	FE9391-EHV-V2 (1.18 mm)	FE9391-EV-V2-M12	FE9391-EV-V2-M12 (M)
Type	V-series Fisheye Panoramic AI Camera			
Camera Features				
Image Sensor	1/1.8" Progressive CMOS in 3840x2160	1/2.3" Progressive CMOS in 4056x3040	1/2.3" Progressive CMOS in 4056x3040	1/2.3" Progressive CMOS in 4056x3040
Max. Resolution	2048x2048	2816x2816	2816x2816	2816x2816
Focal Length	f = 1.245mm	f = 1.18mm	f = 1.18mm	f = 1.18mm
Field of View	180° (H) 180° (V) 180° (D)	180° (H) 180° (V) 180° (D)	180° ± 5° (H) 180° ± 5° (V)	180° ± 5° (H) 180° ± 5° (V)
WDR	WDR Pro	WDR Pro	WDR Pro	WDR Pro
IR Distance	20m	20m	5m	5m
Minimum Illumination	0.065 lux @ F1.6 (Color) <0.001 lux @ F1.6 (B/W) 0 lux with IR illumination on	0.1 lux @ F2.18 (Color) <0.005 lux @ F2.18 (B/W) 0 lux with IR illumination on	0.1 lux @ F2.18 (Color) <0.005 lux @ F2.18 (B/W) 0 lux with IR illumination on	0.1 lux @ F2.18 (Color) <0.005 lux @ F2.18 (B/W) 0 lux with IR illumination on
Video/ Audio/ Network				
Video Compression Codec	H.265, H.264, MJPEG	H.265, H.264, MJPEG	H.265, H.264, MJPEG	H.265, H.264, MJPEG
Maximum Frame Rate	30fps @ 2048x2048 (WDR on)	30fps @ 2816x2816 (WDR off) 20fps @ 2816x2816 (WDR on)	30fps @ 2816x2816 (WDR off) 20fps @ 2816x2816 (WDR on)	30fps @ 2816x2816 (WDR off) 20fps @ 2816x2816 (WDR on)
Built-in Mic	V	V	V	V
ONVIF	Profile G, S, T	Profile G, S, T, M	Profile G, S, T, M	Profile G, S, T, M
AI Analytics				
Smart VCA	V	V	-	-
Object Detection (People)	V	V	-	-
Object Detection (Vehicle)	V	V	-	-
Attribute Extraction	V	V	-	-
Object Detection (Re-Search)	V	V	-	-
General				
Power Consumption	Max. 12.5 W/5 W (IR on/off)	Max.22.8W/10.75 W	Max. 18 W/9.55 W (IR on/off)	Max. 18 W/9.55 W (IR on/off)
Operating Temperature	-40 °C ~ 60°C	-40 °C ~ 55°C	-40 °C ~ 70°C	-40 °C ~ 70°C
Certifications				
IP66	V	V	V	V
IP67	-	-	-	-
IK10	V	V	V	V
IK10+	-	-	-	-
NEMA 4X	V	V	-	-

Panoramic



Model Name	CC9380-HV-V2	CC9381-HV-V2	CC9390-HV	CC9391-HV
Type	V-series Compact Panoramic AI Camera			
Camera Features				
Image Sensor	1/2.8" Progressive CMOS	1/2.8" Progressive CMOS	1/1.8" Progressive CMOS	1/1.8" Progressive CMOS
Max. Resolution	2560x1920 (5MP)	2560x1920 (5MP)	3840x2160 (4K/8MP)	3840x2160 (4K/8MP)
Focal Length	f = 1.47 mm	f = 1.47 mm	f = 2.53mm	f = 2.53mm
Field of View	180° (H) 120° (V) 180°(D)	180° (H) 120° (V) 180°(D)	180° (H) 103° (V) 180° (D)	180° (H) 103° (V) 180° (D)
WDR	WDR Pro	WDR Pro	WDR Pro	WDR Pro
IR Distance	-	20m	-	20m
Minimum Illumination	0.08 lux @ F2.7 (Color) 0.005lux @ F2.7 (B/W)	0.08 lux @ F2.7 (Color) 0.005lux @ F2.7 (B/W) 0 lux with IR illumination on	0.08 lux @ F2.4 (Color) 0.005lux @ F2.4 (B/W)	0.08 lux @ F2.4 (Color) 0.005lux @ F2.4 (B/W) 0 lux with IR illumination on
Video/ Audio/ Network				
Video Compression Codec	H.265, H.264, MJPEG	H.265, H.264, MJPEG	H.265, H.264, MJPEG	H.265, H.264, MJPEG
Maximum Frame Rate	30 fps @ 2560x1920	30 fps @ 2560x1920	30 fps @ 3840x2160	30 fps @ 3840x2160
Built-in Mic	V	V	V	V
ONVIF	Profile G, S, T, M	Profile G, S, T, M	Profile G, S, T, M	Profile G, S, T, M
AI Analytics				
Smart VCA	V	V	V	V
Object Detection (People)	V	V	V	V
Object Detection (Vehicle)	V	V	V	V
Attribute Extraction	V	V	V	V
Object Detection (Re-Search)	V	V	V	V
General				
Power Consumption	Max. 9.12W	Max. 10.26W/6.96W (IR on/off)	Max. 9.96W	Max. 10.83W/7.5W (IR on/off)
Operating Temperature	-30 °C ~ 55°C	-30 °C ~ 60°C	-30 °C ~ 55°C	-30 °C ~ 60°C
Certifications				
IP66	V	V	V	V
IP67	-	-	-	-
IK10	V	V	V	V
IK10+	-	-	-	-
NEMA 4X	-	-	-	-

Panoramic



MA9322-EHTVL



MA9311-EHTV



MA9312-EHTV



MA9322-EHTV-V2

Model Name	MA9322-EHTVL	MA9311-EHTV	MA9312-EHTV	MA9322-EHTV-V2
Type	V-series Multi-directional Panoramic AI Camera			
Camera Features				
Image Sensor	1/2.7" Progressive CMOS	1/2.8" Progressive CMOS	1/1.8" Progressive CMOS	1/2.8" Progressive CMOS
Max. Resolution	2688x1920 (5MP) x 4	2560x1920 (5MP) x 2	3840x2160 (4K/8MP) x 2	2560x1920 (5MP) x 4
Focal Length	f = 3.7 ~ 7.7mm	f = 2.8 ~ 12mm	f = 4.3~9.8mm	f = 3.2 ~ 7.7mm
Field of View	88.6° ~ 40.1° (H) 61.2° ~ 28.6° (V) 115.5° ~ 49.5° (D)	96° ~ 30° (H) 69° ~ 23° (V) 129° ~ 38°(D)	110.4° ~ 45.1° (H) 57.9° ~ 25.4° (V) 133.9° ~ 51.8° (D)	94° ~ 43° (H) 67° ~ 33° (V) 129° ~ 55° (D)
WDR	WDR Pro	WDR Pro	WDR Pro	WDR Pro
IR Distance	30m	20m	20m	30m
Minimum Illumination	0.035 lux @ F1.9 (Color) 0.005 lux @ F1.9 (B/W) 0 lux with IR illumination on	0.05 lux @ F1.6 (Color) 0.005 lux @ F1.6 (B/W) 0 lux with IR illumination on	0.02 lux @ F1.6 (Color) 0.005 lux @ F1.6 (B/W) 0 lux with IR illumination on	0.07 lux @ F1.85 (Color) 0.005 lux @ F1.85 (B/W) 0 lux with IR illumination on
Video/ Audio/ Network				
Video Compression Codec	H.265, H.264, MJPEG	H.265, H.264, MJPEG	H.265, H.264, MJPEG	H.265, H.264, MJPEG
Maximum Frame Rate	15 fps @ (2688x1920) x 4 30 fps @ (2560x1440) x 4	30 fps @ (2560x1920) x 2	30 fps @ (3840x2160) x 2	30 fps @ (2560x1920) x 4
Built-in Mic	√	√	√	√
ONVIF	-	Profile G, S, T, M	Profile G, S, T, M	Profile G, S, T, M
AI Analytics				
Smart VCA	-	√	√	√
Object Detection (People)	-	√	√	√
Object Detection (Vehicle)	-	√	√	√
Attribute Extraction	-	√	√	√
Object Detection (Re-Search)	-	√	√	√
General				
Power Consumption	Max. 25W	Max. 25.5 W	Max 25.5W	Max. 25.5 W
Operating Temperature	-40 °C ~ 50°C	-40 °C ~ 55°C	-40°C ~ 55°C	-40 °C ~ 55°C
Certifications				
IP66	√	√	√	√
IP67	-	√	√	-
IK10	√	√	√	√
IK10+	-	-	-	-
NEMA 4X	√	√	√	√

Panoramic



MS9321-EHV-V2



MS9390-EHV-V2

Model Name	MS9321-EHV-V2	MS9390-EHV-V2
Type	V-series Multi-sensor Panoramic AI Camera	
Camera Features		
Image Sensor	1/2.8" Progressive CMOS	1/2.7" Progressive CMOS
Max. Resolution	6912x2624 (18MP)	4864x1632 (8MP)
Focal Length	f = 3.5 mm	f = 2.8 mm
Field of View	180° (H) 62.5° (V) 180° (D)	180° (H) 50° (V) 180° (D)
WDR	WDR Pro	WDR Pro
IR Distance	30m	20m
Minimum Illumination	0.055 lux @ F2.0 (Color) 0.005 lux @ F2.0 (B/W) 0 lux with IR illumination on	0.018 lux @ F1.2 (Color) 0.01 lux @ F1.2 (B/W) 0 lux with IR illumination on
Video/ Audio/ Network		
Video Compression Codec	H.265, H.264, MJPEG	H.265, H.264, MJPEG
Maximum Frame Rate	30 fps @ 6912x2624 (Deep Learning VCA OFF) 20 fps @ 6912x2624 (Deep Learning VCA ON)	30 fps @ 4864x1632
Built-in Mic	√	√
ONVIF	Profile G, S, T	Profile G, S, T
AI Analytics		
Smart VCA	√	√
Object Detection (People)	√	√
Object Detection (Vehicle)	√	√
Attribute Extraction	√	√
Object Detection (Re-Search)	√	√
General		
Power Consumption	Max. 18.81 W AC 24V: Max. 26.4 W	Max. 20 W/13.5W (IR on/off)
Operating Temperature	-40 °C ~ 55°C	-40 °C ~ 55°C
Certifications		
IP66	√	√
IP67	-	-
IK10	√	√
IK10+	-	-
NEMA 4X	-	-

Pan-Tilt-Zoom



SD9161-H-V2

NEW



SD9367-EHL



SD9368-EHL



SD9384-EHL



NEW SD9387-EHL



SD9394-EHL

Type	V-series AI PTZ Camera					
Camera Features						
Image Sensor	1/2.8" Progressive CMOS	1/2.8" Progressive CMOS	1/2.8" Progressive CMOS	1/2.8" Progressive CMOS	1/2.8" Progressive CMOS	1/1.8" Progressive CMOS
Max. Resolution	1920x1080 (2MP)	1920x1080 (2MP)	1920x1080 (2MP)	2560x1920 (5MP)	2560x1920 (5MP)	3840x2160 (8M)
Focal Length	5.1~51mm (10x zoom)	4.25~170mm (40x zoom)	4.25~170mm (40x zoom)	4.94~148.24mm (30x zoom)	4.94~148.24mm (30x zoom)	6.5~212mm (32x zoom)
Field of View	55.2° ~ 7.1° (H) 31.8° ~ 4.1° (V) 62.4° ~ 8.1° (D)	65.7° ~ 1.9° (H) 39.4° ~ 1.1° (V) 73.0° ~ 2.1° (D)	65.7° ~ 1.9° (H) 39.4° ~ 1.1° (V) 73.0° ~ 2.1° (D)	54.1° ~ 1.9° (H) 41.2° ~ 1.4° (V) 65.7° ~ 2.4° (D)	54.1° ~ 1.9° (H) 41.2° ~ 1.4° (V) 65.7° ~ 2.4° (D)	63.5° ~ 2.0° (H) 37.4° ~ 1.1° (V) 70.7° ~ 2.3° (D)
WDR	WDR Pro	WDR Pro	WDR Pro	WDR Pro	WDR Pro	WDR Pro
IR Distance	-	-	250m	200m	-	250m
Minimum Illumination	0.14 Lux @ F1.6 (Color) 0.005 Lux @ F1.6 (B/W)	0.05 Lux @ F1.6 (Color) <0.005 Lux @ F1.6 (B/W)	0.04 Lux @ F1.6 (Color) <0.005 Lux @ F1.6 (B/W)	0.03 lux @ F1.3 (Color) 0.005 lux @ F1.3 (B/W)	0.045 lux @ F1.3 (Color) 0.005 lux @ F1.3 (B/W)	0.02 lux @ F1.4 (Color) <0.005 lux @ F1.4 (B/W)
Video/ Audio/ Network						
Video Compression Codec	H265, H264, MJPEG	H.265, H.264, MJPEG	H265, H264, MJPEG	H265, H264, MJPEG	H.265, H.264, MJPEG	H265, H264, MJPEG
Maximum Frame Rate	30 fps @ 1920x1080 (WDR on) 60 fps @ 1920x1080 (WDR off)	30 fps @ 1920x1080 (WDR on) 60 fps @ 1920x1080 (WDR off)	30 fps @ 1920x1080 (WDR on) 60 fps @ 1920x1080 (WDR off)	30 fps @ 2560x1920 (WDR Pro on) 30 fps @ 2560x1440 (WDR Pro on) 60 fps @ 1920x1080 (WDR Pro off)	30 fps @ 2560x1920 (WDR Pro on) 30 fps @ 2560x1440 (WDR Pro on) 60 fps @ 1920x1080 (WDR Pro off)	30 fps @ 3840x2160 (WDR on)
Built-in Mic	-	-	-	-	-	-
ONVIF	Profile G, S, T	Profile G, S, T, M	Profile G, S, T	Profile G, S, T	Profile G, S, T, M	Profile G, S, T, M
AI Analytics						
Smart Tracking Advanced	✓	✓	✓	✓	✓	✓
Object Detection (People)	✓	✓	✓	✓	✓	✓
Object Detection (Vehicle)	✓	✓	✓	✓	✓	✓
Attribute Extraction	✓	✓	✓	✓	✓	✓
Object Detection (Re-Search)	✓	✓	✓	✓	✓	✓
General						
Power Consumption	PoE: Max. 17W AC/DC 24V: Max. 17W	PoE: Max. 25.5W/22.5W (Heater & Fan on/off) DC 48V: Max. 25.5W/22.5W (Heater & Fan on/off) AC 24V: Max. 25.5W/22.5W (Heater & Fan on/off)	PoE: Max. 51W/26W (IR on/off) DC 48V: Max. 51W/26W (IR on/off) AC 24V: Max. 51W/26W (IR on/off)	PoE: Max. 51W/26W (IR on/off) DC 48V: Max. 51W/26W (IR on/off) AC 24V: Max. 51W/26W (IR on/off)	Max. 25.5W (Heater & Fan on) Max. 22.5W (Heater & Fan off)	PoE: Max. 51W/26W (IR on/off) DC 48V: Max. 51W/26W (IR on/off) AC 24V: Max. 51W/26W (IR on/off)
Operating Temperature	-40°C ~ 55°C	-40°C ~ 55°C	-40°C ~ 60°C (IR on)	-40°C ~ 60°C (IR on)	-40°C ~ 55°C	-40 °C ~ 55°C
Certifications						
IP66	-	✓	✓	✓	✓	✓
IP67	-	-	-	-	-	-
IK10	-	✓	✓	✓	✓	✓
IK10+	-	-	-	-	-	-
NEMA 4X	-	✓	✓	✓	✓	✓

Box



IP9165-HT-V2 (3.9-10 mm)



IP9181-HT-V2 (2.8-8.5 mm)



IP9191-HT-V2 (3.9-10 mm)

Type	V-series AI Box Camera		
Camera Features			
Image Sensor	1/2" Progressive CMOS	1/2.8" Progressive CMOS	1/1.8" Progressive CMOS
Max. Resolution	1920x1080	2560 x 1920 (4:3) 2880 x 1632 (16:9)	3840 x 2160 (16:9) 1920x1080p(16:9)
Focal Length	f= 3.9~10mm	f= 2.8~8.5mm	f= 3.9~10mm
Field of View	109.7° ~ 42.7° (H) 58.5° ~ 23.9° (V) 129.9° ~ 49° (D)	106.8°~36.4° (H) 77.4°~27.3° (V) 143.1°~45.6° (D)	118.7°~45.6° (H) 62.9°~25.6° (V) 141.9°~52.4° (D)
WDR	WDR Pro II	WDR Pro	WDR Pro
IR Distance	-	-	-
Minimum Illumination	0.01 lux @ F.15 (Color) 0.005 lux @ F1.5 (B/W)	0.01 lux @ F.15 (Color) 0.005 lux @ F1.5 (B/W)	0.01 lux @ F1.2 (Color) 0.005 lux @ F1.2 (B/W)
Video/ Audio/ Network			
Video Compression Codec	H.265,H.264, MJPEG	H.265,H.264, MJPEG	H.265,H.264, MJPEG
Maximum Frame Rate	60 fps @ 1920x1080 (WDR Pro) 30 fps @ 1920x1080 (WDR Pro II)	2560 x 1920 @ 30fps (WDR on) 2880 x 1632 @ 30fps (WDR on)	30 fps @ 3840x2160 (WDR Pro on) 60 fps @ 1920x1080 (WDR Pro off)
Built-in Mic	-	-	-
ONVIF	Profile G, S, T	Profile G, S, T, M	Profile G, S, T, M
AI Analytics			
Smart VCA	✓	✓	✓
Object Detection (People)	✓	✓	✓
Object Detection (Vehicle)	✓	✓	✓
Attribute Extraction	✓	✓	✓
Object Detection (Re-Search)	✓	✓	✓
General			
Power Consumption	DC 12V: Max. 8.88 W AC 24V: Max. 17 W PoE: Max. 10 W	DC 12V: Max. 8.88 W AC 24V: Max. 17 W PoE: Max. 10 W	DC 12V: Max. 8.88 W AC 24V: Max. 17 W PoE: Max. 10 W
Operating Temperature	-10 °C ~ 60°C	-10 °C ~ 60°C	-10 °C ~ 60°C
Certifications			
IP66	-	-	-
IP67	-	-	-
IK10	-	-	-
IK10+	-	-	-
NEMA 4X	-	-	-

Thermal



TB9332-E (9 mm)



TB9332-E (15 mm)



TB9332-E (35 mm)



TB9332-E (50 mm)

Model Name	TB9332-E (9 mm)	TB9332-E (15 mm)	TB9332-E (35 mm)	TB9332-E (50 mm)
Type	S-series Thermal Camera			
Camera Features				
Image Sensor	Uncooled VOx Micro bolometer	Uncooled VOx Micro bolometer	Uncooled VOx Micro bolometer	Uncooled VOx Micro bolometer
Max. Resolution	Effective pixels: 640x512 Image scale up to: 1280x1024	Effective pixels: 640x512 Image scale up to: 1280x1024	Effective pixels: 640x512 Image scale up to: 1280x1024	Effective pixels: 640x512 Image scale up to: 1280x1024
Focal Length	f = 9 mm	f = 15 mm	f = 35 mm	f = 50 mm
Field of View	48° (H) 38° (V)	32° (H) 26° (V)	12° (H) 10° (V)	8° (H) 7° (V)
IR Distance	-	-	-	-
Video/ Audio/ Network				
Video Compression Codec	H.265, H.264	H.265, H.264	H.265, H.264	H.265, H.264
Maximum Frame Rate	25 fps @ 1280x1024	25 fps @ 1280x1024	25 fps @ 1280x1024	25 fps @ 1280x1024
Built-in Mic	-	-	-	-
ONVIF	Profile G, S, T	Profile G, S, T	Profile G, S, T	Profile G, S, T
AI Analytics				
Temperature measurement alarms	✓	✓	✓	✓
Fire spot detection	✓	✓	✓	✓
Smoking detection	✓	✓	✓	✓
Smoke & flame detection	-	-	-	-
VCA	✓	✓	✓	✓
General				
Power Consumption	Max. 5W	Max. 5W	Max. 5W	Max. 5W
Operating Temperature	-40 °C ~ 60°C	-40 °C ~ 60°C	-40 °C ~ 60°C	-40 °C ~ 60°C
Certifications				
IP66	✓	✓	✓	✓
IP67	-	-	-	-
IK10	-	-	-	-
IK10+	-	-	-	-
NEMA 4X	-	-	-	-

Thermal



TB9333-E (3.5 mm)



TB9333-E (7 mm)



TT9333-E (3.5 mm)



TT9333-E (7 mm)

Model Name	TB9333-E (3.5 mm)	TB9333-E (7 mm)	TT9333-E (3.5 mm)	TT9333-E (7 mm)
Type	S-series Thermal Camera			
Camera Features				
Image Sensor	Dual sensor: Uncooled VOx Micro bolometer 1/2.7" Progressive CMOS	Dual sensor: Uncooled VOx Micro bolometer 1/2.7" Progressive CMOS	Dual sensor: Uncooled VOx Micro bolometer 1/2.7" Progressive CMOS	Dual sensor: Uncooled VOx Micro bolometer 1/2.7" Progressive CMOS
Max. Resolution	Thermal lens: Effective pixels: 256x192 Image scale up to: 704x576 Optical lens: 2560x1440	Thermal lens: Effective pixels: 256x192 Image scale up to: 704x576 Optical lens: 2560x1440	Thermal lens: Effective pixels: 256x192 Image scale up to: 704x576 Optical lens: 2560x1440	Thermal lens: Effective pixels: 256x192 Image scale up to: 704x576 Optical lens: 2560x1440
Focal Length	Thermal lens: f = 3.5 mm Optical lens: f = 4 mm	Thermal lens: f = 7 mm Optical lens: f = 8 mm	Thermal lens: f = 3.5 mm Optical lens: f = 4 mm	Thermal lens: f = 7 mm Optical lens: f = 8 mm
Field of View	Thermal lens(3.5mm) 48° (H) 36° (V) Optical lens (4mm) 92° (H) 46° (V)	Thermal lens (7mm) 24° (H) 18° (V) Optical lens (8mm) 40° (H) 20° (V)	Thermal lens(3.5mm) 48° (H) 36° (V) Optical lens (4mm) 92° (H) 46° (V)	Thermal lens (7mm) 24° (H) 18° (V) Optical lens (8mm) 40° (H) 20° (V)
IR Distance	35m	50m	35m	50m
Video/ Audio/ Network				
Video Compression Codec	H265, H264, MJPEG	H265, H264, MJPEG	H265, H264, MJPEG	H265, H264, MJPEG
Maximum Frame Rate	Thermal: 25 fps @ 704x576 Optical: 25 fps @ 2560x1440	Thermal: 25 fps @ 704x576 Optical: 25 fps @ 2560x1440	Thermal: 25 fps @ 704x576 Optical: 25 fps @ 2560x1440	Thermal: 25 fps @ 704x576 Optical: 25 fps @ 2560x1440
Built-in Mic	-	-	-	-
ONVIF	Profile G, S, T	Profile G, S, T	Profile G, S, T	Profile G, S, T
AI Analytics				
Temperature measurement alarms	✓	✓	✓	✓
Fire spot detection	✓	✓	✓	✓
Smoking detection	✓	✓	✓	✓
Smoke & flame detection	✓	✓	✓	✓
VCA	✓	✓	✓	✓
General				
Power Consumption	Max.12W	Max.12W	Max.10W	Max.10W
Operating Temperature	-40 °C ~ 60°C	-40 °C ~ 60°C	-40 °C ~ 60°C	-40 °C ~ 60°C
Certifications				
IP66	✓	✓	✓	✓
IP67	-	-	-	-
IK10	-	-	-	-
IK10+	-	-	-	-
NEMA 4X	-	-	-	-

Corner Dome



CD9381-HNVF2



CD9381-HNTV

Model Name	S-series Corner Dome Camera	
Type	S-series Corner Dome Camera	
Camera Features		
Image Sensor	1/2.7" Progressive CMOS	1/2.7" Progressive CMOS
Max. Resolution	2560x1920 (5MP)	2560x1920 (5MP)
Focal Length	f = 2.4 mm	f = 2.8 ~ 8 mm
Field of View	124° (H) 92° (V) 156° (D)	95°~41° (H) 69°~31° (V) 126°~53° (D)
WDR	WDR Pro	WDR Pro
IR Distance	10m	10m
Minimum Illumination	0.07 lux @ F2.1(Color) (30IRE) <0.005 lux @ F2.1(B/W) 0 lux with IR illumination on	0.085 lux @ F2.1(Color) (30IRE) <0.005 lux @ F2.1(B/W) 0 lux with IR illumination on
Video/ Audio/ Network		
Video Compression Codec	H.265, H.264, MJPEG	H.265, H.264, MJPEG
Maximum Frame Rate	30 fps @ 2560x1920	30 fps @ 2560x1920
Built-in Mic	V	V
ONVIF	Profile G, S, T	Profile G, S, T
Analytics		
Smart VCA	V	V
Object Detection_People	V	V
Object Detection_Vehicle	V	V
Attribute Extraction	V	V
Object Detection_Re-Search	V	V
General		
Power Consumption	PoE: Max. 10.36 W DC 12V: Max. 9.96 W AC 24V: Max. 18 W	PoE: Max. 10.36 W DC 12V: Max. 9.96 W AC 24V: Max. 18 W
Operating Temperature	-10°C ~ 55°C	-10°C ~ 55°C
Certifications		
IP66	-	-
IP67	V	V
IK10	-	-
IK10+	V	V
NEMA 4X	-	-

Counting



SC9133-RTL

Model Name	S-series Counting Camera
Type	S-series Counting Camera
Camera Features	
Image Sensor	1/2.8" Progressive CMOS
Max. Resolution	1792 x 1792 (3MP)
Focal Length	f = 1.47mm
Field of View	140° (H) 140° (V) 140° (D)
WDR	WDR Pro
Minimum Illumination	0 lux with illumination on
Video/ Audio/ Network	
Video Compression Codec	H.265, H.264, MJPEG
Maximum Frame Rate	1792 x 1792 @ 30 f ps 896 x 896 @ 30 f ps 448 x 448 @ 30 f ps
Built-in Mic	V
Analytics	
Smart VCA	-
Object Detection (People)	-
Object Detection (Vehicle)	-
Attribute Extraction	-
Object Detection (Re-Search)	-
General	
Power Consumption	PoE: Max. 12.5W DC: Max. 13.3W
Operating Temperature	-30 °C ~ 60°C
General	
IP66	-
IP67	-
IK10	-
IK10+	-
NEMA 4X	-

Modular



VC9101

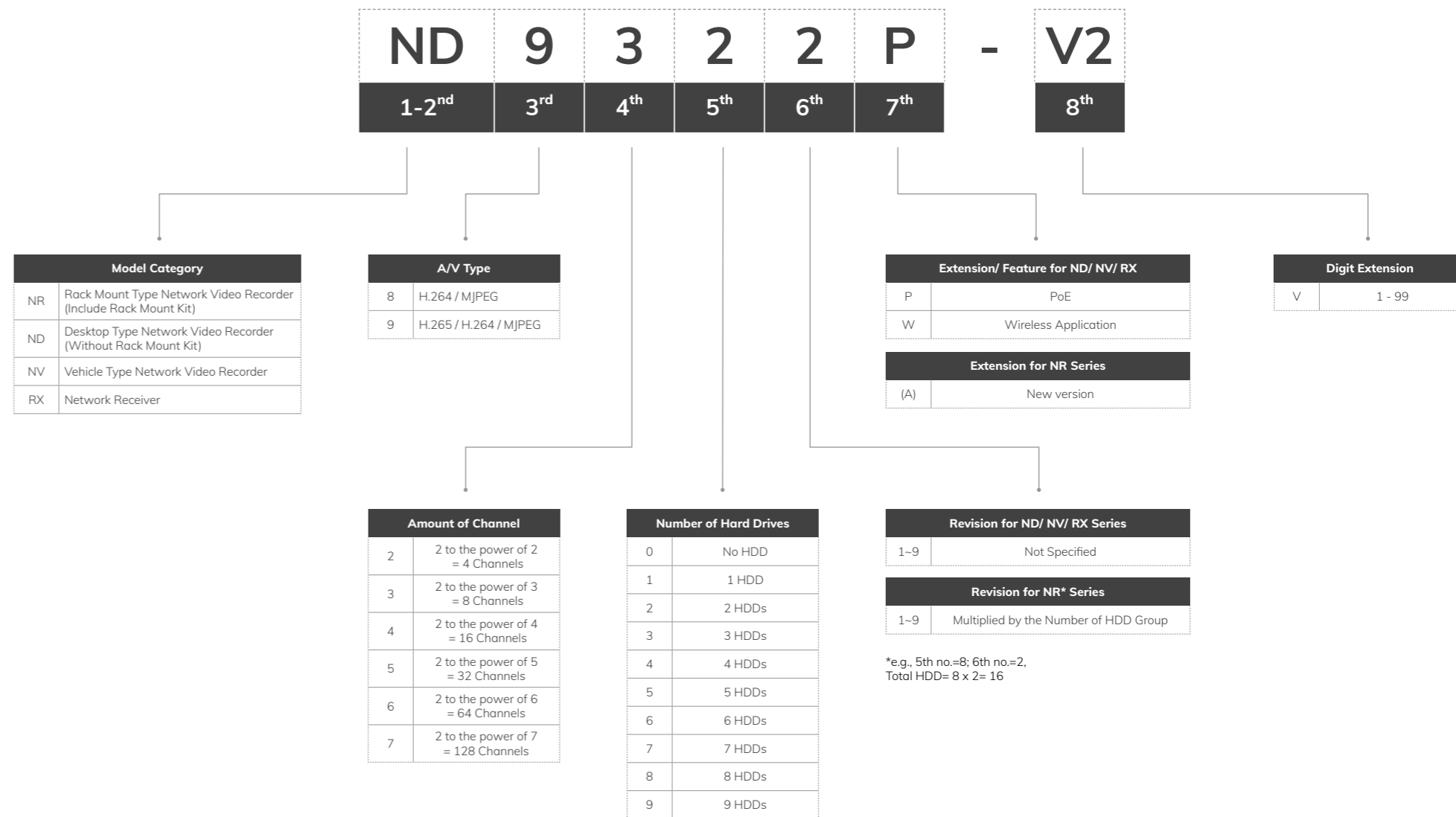
Model Name	S-series Modular Camera
Type	S-series Modular Camera
Camera Features	
Max. Resolution	Depends on CU version: 2688x1520/ 1920x1920
WDR	WDR Pro
Video/ Audio/ Network	
Video Compression Codec	H.265, H.264, MJPEG
Maximum Frame Rate	Depends on CU sensor
Built-in Mic	-
ONVIF	Profile G, S, T
Analytics	
Smart VCA	V (Face Check)
Object Detection (People)	-
Object Detection (Vehicle)	-
Attribute Extraction	-
Object Detection (Re-Search)	-
General	
Power Consumption	< 8.5W
Operating Temperature	-10 °C ~ 50°C
General	
IP66	-
IP67	-
IK10	-
IK10+	-
NEMA 4X	-

Network Video Recorder

Embedded NVR & Recording Server



Network Video Recorder Naming Rule



Embedded NVR

Simple to Navigate but Versatile



Cloud Ready with VORTEX

VORTEX Connect offers powerful cloud management for V-series Embedded NVR. Monitor and control your cameras from anywhere, anytime, ensuring constant access.



CMS Ready with VAST Security Station

Grow easily by adding cameras as your business expands. Keep data safe by storing and managing it on-site, reducing internet risks.



Core+ AI

VIVOTEK Core+ AI supporting Deep Search and Smart VCA, offering a faster and smarter user experience.



Simplify Your Operations

- Multi-display
- Fisheye dewrap in local and web client
- Embedded PoE



Secure Connection & Reliable Compliance

No more plugins, Chrome browser supported, NDAA compliant and have cyber protection via Trend Micro.

Embedded NVR



ND9442P/ ND9542P



ND9326P/ ND9426P

Model	Embedded NVR	
Type	Embedded NVR	
Local Display		
Channels	Up to 16/32 channels	Up to 8/16 channels
Video Output	HDMI/VGA	HDMI/VGA
Display Resolution	3840x2160/ 1920x1080/ 1280x720	3840x2160/ 1920x1080/ 1280x720
Fisheye Dewarp	Local: 10,1P,1R,1O3R,1O8R, 1P3R Web: 10, 1R, 1P	Local: 10,1P,1R,1O3R,1O8R, 1P3R Web: 10, 1R, 1P
Video/ Record		
Video Compression	H.265/H.264/MJPEG	H.265/H.264/MJPEG
Max. Decoding Capability	H.265/H.264: 3840x2160 @ 90 fps	H.265/H.264: 3840x2160 @ 120 fps
Decoding Resolution (Local)	Up to 7680x2560	Up to 7680x2560
Recording Throughput	192 Mbps	192 Mbps
Storage/ General		
Hard Disk	3.5" SATA HDD*4	3.5" SATA HDD*2
RAID	RAID 0, 1, 5	RAID 0, 1
PoE	16x 802.3at/af Compliant PoE Ports (Total Max. 200 W)	8/16x 802.3at/af Compliant PoE Ports (Total Max. 120 W/200 W)
Connectors	Ethernet 10/100/1000 RJ45 x2 Alarm In x16, Alarm Out x8 USB 2.0 x2, USB 3.0 x1 Audio Output x1 Audio Input x1 (Reserved) RS485 (Reserved)	Ethernet 10/100/1000 RJ45 x2 Alarm In x4, Alarm Out x1 USB 2.0 x2, USB 3.0 x1 Audio Output x1 Audio Input x1 (Reserved)
Power Input	AC 100 ~ 240V/ 50 ~ 60Hz	AC 100 ~ 240V/ 50 ~ 60Hz
Power Consumption	Max. 300 W	Max. 190 W/ 270W
Installation, Management, and Maintenance	VSS, VAST 2, Shepherd, VORTEX, iViewer (iOS/Android)	VSS, VAST 2, Shepherd, VORTEX, iViewer (iOS/Android)
Dimensions	432 x 421 x 66 mm	365 x 315 x 44 mm
Advanced Features		
Smart VCA Event Search	✓	✓
Deep Search	✓	✓
Cybersecurity Management	✓	✓
Trend Micro IoT Security	✓	✓
NDAA Compliance Product	✓	✓

Recording Server

Super and Outstanding Performance Video Recorder for Large Scale Systems

Hot-Swappable HDD

Supports hot-swappable HDD bays with RAID 0/1/5/6/10/50/60, and substation failover failover for reliable and secure recording data.

Deep Search with VSS Pro

With VIVOTEK VAST Security Station Professional edition to support Deep Search, quickly locating people and vehicles within recorded footage using attributes, trajectories, and even similar appearances.

Built-in License with VSS Pro

Built-in license with VIVOTEK VAST Security Station Professional edition. Ready-to-go functionality with essential features, including 3rd Party Integration, Matrix and failover for substation.

Reliable Surveillance with Failover

Experience a secure and stable monitoring atmosphere with the Supreme series, featuring failover for continuous operation.

Recording Server



NR9682-V3



NR9581-V3

Model	Recording Server	
Type	Recording Server	
Display		
Channels	64 channels (expandable to 192-CH)	32 channels (expandable to 128-CH)
Video Output	HDMI/ DP/ DVI/ VGA	HDMI/ DP/ DVI/ VGA
Display Resolution	HDMI: 4096x2160/ DP: 7680x4320 DVI: 1920x1200/ VGA: 1920x1200	HDMI: 4096x2160/ DP: 7680x4320 DVI: 1920x1200/ VGA: 1920x1200
Fisheye Dewarp	10, 1P, 1R, 103R, 4R, 2P, 4R Pro, 108R	10, 1P, 1R, 103R, 4R, 2P, 4R Pro, 108R
Video/ Record		
Video Compression	H.265/H.264/MJPEG/MPEG4	H.265/H.264/MJPEG/MPEG4
Max. Decoding Capability	H.264: 1920x1080 @ 360 fps H.265: 1920x1080 @ 180 fps	H.264: 1920x1080 @ 360 fps H.265: 1920x1080 @ 180 fps
Decoding Resolution (Local)	Up to 7680x2560	Up to 7680x2560
Recording Throughput	512 Mbps	512 Mbps
Storage/ General		
Hard Disk	3.5" SATA HDD*16 (Hot Swappable)	3.5" SATA HDD*8 (Hot Swappable)
RAID	RAID 0, 1, 5, 6, 10, 50, 60	RAID 0, 1, 5, 6, 10, 50, 60
Connectors	2.5 Gigabit Ethernet (RJ-45) x2 USB 2.0 x2, USB 3.2 x4 Microphone Audio Jack Input x1 3.5 Line Input Audio Jack x1 3.5 Line Output Audio Jack x1	2.5 Gigabit Ethernet (RJ-45) x2 USB 2.0 x4, USB 3.2 x4 Microphone Audio Jack Input x1 3.5 Line Input Audio Jack x1 3.5 Line Output Audio Jack x1
Power Input	Redundant Power AC 100 ~ 240V	Redundant Power AC 100 ~ 240V
Power Consumption	Max. 920 W	Max. 550 W
Installation, Management, and Maintenance	VSS Pro, Shepherd	VSS Pro, Shepherd
Dimensions	437 x 647 x 132 mm	437 x 647 x 89 mm
Advanced Features		
Cybersecurity Management	V	V
Data Magnet	V	V
Failover	V	V
LPR Solution	V	V
Smart VCA Event	V	V
Smart Search II	V	V
Deep Search	V	V
NDAA Compliance Product	V	V

VAST Security Station

VIVOTEK Video Management Software

VAST Security Station (VSS) is a video management software with an intuitive, user-friendly interface designed to help customers efficiently set up and manage projects. Its centralized management supports easy scalability, from single shops to multi-site deployments, while seamlessly integrating with VIVOTEK's wide range of network devices, such as cameras, NVRs, PoE switches, and IP audio systems, to meet various surveillance needs.

Simplified Setup & Deployment

Effortless Camera Setup

Effortlessly connect and deploy cameras using auto-setup wizard. It automatically scans all camera devices that share the same network IP subnet as the VMS, including both VIVOTEK and third-party ONVIF cameras. Easily add all of cameras to the VMS without complicated steps for a seamless setup experience.



Seamless Integration with VIVOTEK and 3rd Party



AI-Powered Intelligence & Automated Operations

Zero-Calibration AI

Achieve instant AI surveillance with Vision Object Analytics. These supported cameras eliminate the need for complicated setup and send metadata on attributes and trajectories. Simplify deployment and get started.



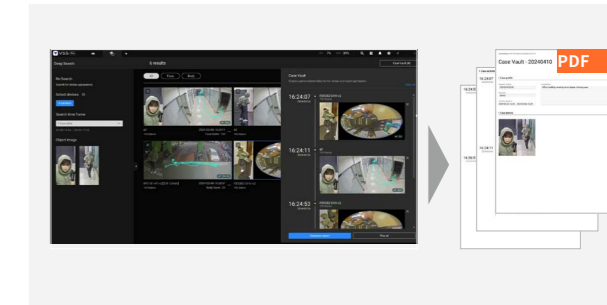
Accelerated Evidence Retrieval

Efficient evidence search using multiple attributes. Quickly locate critical events by viewing snapshots of subjects and their routes, significantly reducing the time spent on video playback with Deep Search.



Streamlined Case Management

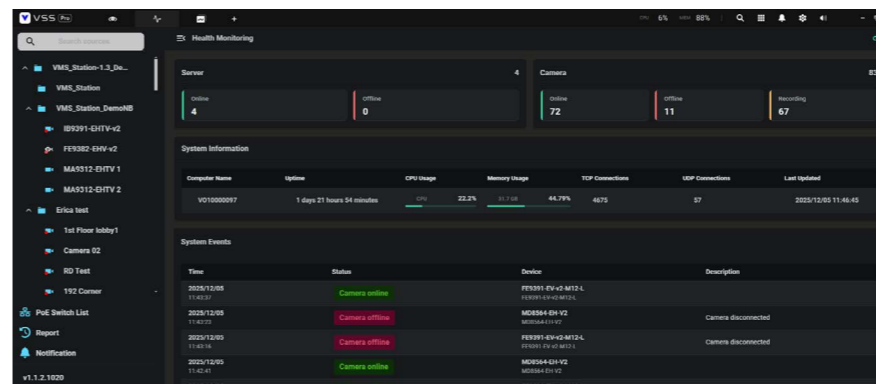
Simplify case management with Case Vault. Turn Deep Search findings into organized video clips and streamlined reports, making evidence compilation and review effortless.



Comprehensive Management in Control

Real-Time Health and Operations

Gain full command over surveillance infrastructure from a unified platform. Easily manage PoE connections, storage, and camera placements. Health Monitoring (Beta) tracks the status of system devices, providing real-time alerts & proactive warnings, and enabling remote reboot of disconnected cameras, ensuring maximum uptime for system.



Flexible, Scalable Growth

VSS supports massive scalability, handling up to 22,400 cameras for projects ranging from small-to-medium enterprises to large, continuous 24/7 operations. Leveraging Vision Object Analysis cameras, easily and flexibly expand your AI surveillance system as your needs grow.



VAST Security Station



Product Edition	VSS Lite	VSS Standard	VSS Professional	
Product Overview	Free entry-level VMS for basic surveillance needs	Cost-effective solution for small and mid-size business	Designed for mid-size to large-scale projects requiring central management and 24/7 operations	
Deployment				
Maximum Number of Cameras Per Server	32	256	320	
Maximum Number of Clients Per Server	200	200	200	
Maximum Number of Substations Per System	0	64 (ND/NV series NVR)	700 (ND/NV series NVR, VSS Pro NR series NVR, VSS Professional Station)	
Maximum Number of Cameras Per System	32	256	22,400	
Key Features				
Live view	✓	✓	✓	
Recording	✓	✓	✓	
Playback	✓	✓	✓	
Backup	✓	✓	✓	
Event	✓	✓	✓	
Dashboard	✓	✓	✓	
Alarms	-	✓	✓	
E-map	-	✓	✓	
Counting Report	-	✓	✓	
Video Wall (Matrix)	-	-	✓	
Search				
Bookmark Search	✓	✓	✓	
Event Search	✓	✓	✓	
Alarm Search	-	✓	✓	
Smart Search	-	✓	✓	
Deep Search	Object Search	-	✓	
	Attribute Search	-	✓	
	Scene Search	-	✓	
	Re-Search	-	-	✓
	Case Vault	-	-	✓

VAST Security Station



Product Edition	VSS Lite	VSS Standard	VSS Professional
Product Overview	Free entry-level VMS for basic surveillance needs	Cost-effective solution for small and mid-size business	Designed for mid-size to large-scale projects requiring central management and 24/7 operations
User Management			
User Role	Administrator	✓	✓
	Customizable	✓	✓
	User Pre-defined	-	✓
Video Encryption			
Digital Watermark	✓	✓	✓
Exported Video Encryption	-	V (AES-256 CTR)	
Recording Encryption	-	-	V (AES-256 CTR)
Export			
Exported Video Mask	-	-	✓
Device Compatibility			
Camera	VIVOTEK 9000 series		
3rd Party Video Source	-	ONVIF, RTSP	ONVIF, RTSP
Substation	-	VIVOTEK ND/NV 9000 series NVR	VIVOTEK ND/NV 9000 series NVR, VSS NR series NVR, VSS Professional Station
Joystick	-	✓	✓
Network Audio Device	-	✓	✓
Wiegand Converter	-	✓	✓
I/O Box	-	✓	✓
Access Control	-	✓	✓
Managed PoE Switch	-	VIVOTEK L2 series, VIVOTEK Lite Managed series	VIVOTEK L2 series, VIVOTEK Lite Managed series
Cloud Service			
VORTEX Connect	✓	✓	✓
VIVOTEK Premium Partner Portal	-	-	✓
Integration			
Data Magnet	-	✓	✓
TCP Message	-	✓	✓
Failover			
CMS Failover	-	-	✓
Substation Failover	-	-	✓



The Hybrid Cloud Platform for Modern Security Operations

VORTEX is VIVOTEK's cloud-managed security platform that connects cameras, NVRs, on-prem VMS, sensors, and AI analytics into one unified operating layer. Designed for hybrid environments, VORTEX enables organizations to modernize at their own pace-deploying cloud, leveraging existing systems, and automating daily operations without disruption.



Explore more in VORTEX Brochure

Unified Cloud. Hybrid Security. Total Simplicity



Unified Cloud

One platform to manage all cameras, access control, sensors, and AI-delivering centralized visibility across sites. Low-bandwidth background connectivity, maintaining reliable operation at 20-50 kbps per device.

Hybrid Scalability

One cloud to scale across edge, on-prem, and legacy systems. Deploy VORTEX direct-to-cloud cameras, or existing cameras via VIVOTEK Core+AI NVR or VSS - modernize without forklift upgrades.

Total Simplicity

Intuitive interface with Deep Search, Think Search/ Think Alert powered by VLM (Vision language model), real-time notifications, and visual investigation features - faster response with lower operational workload.

Effortless Security at Scale



In-house cameras designed in privacy



Smart cloud management platform



Consultative services & technical support

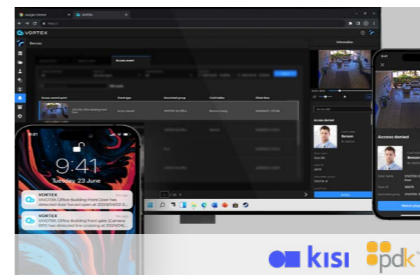
Open Integration. One Platform

VORTEX connects video intelligence with audio, access control, and sensors to enable automated responses.

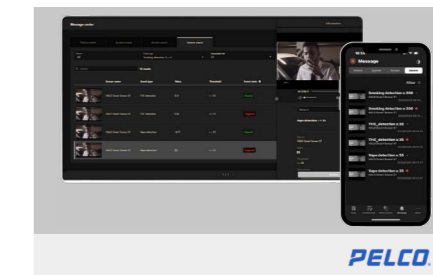
Network Speaker



Access Control



Smart Sensor



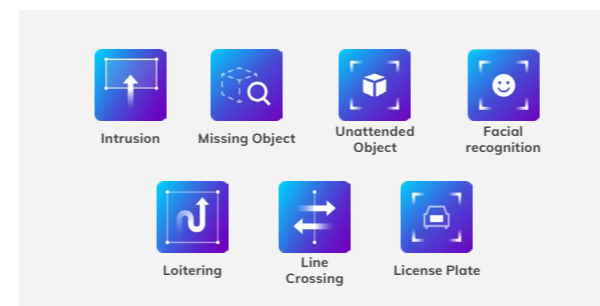
Digital Signage



Unified AI Intelligence. Instant Protection

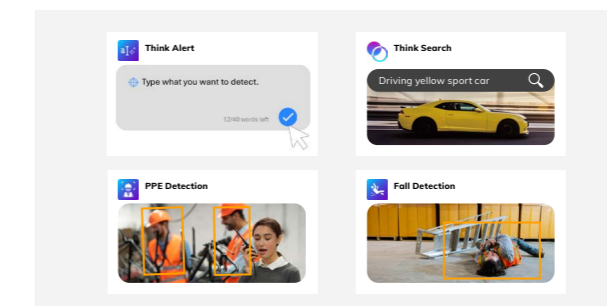
Edge AI - Instant Protection

Edge AI delivers real-time detection at the source - stopping threats instantly with low latency and lower cloud costs.



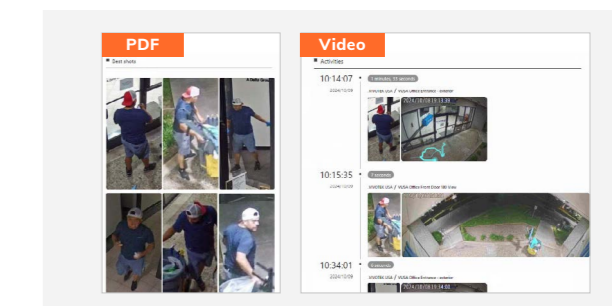
Cloud & Generative AI

Cloud & Generative AI simplify decision-making-enabling natural-language search and intelligent alerts that cut investigation time, boost situational awareness, and reduce labor costs.



One Workflow for Every Case

Instant alerts connect detection, search, and reporting in one seamless flow. Share in simple click.



Modernize without Disruption

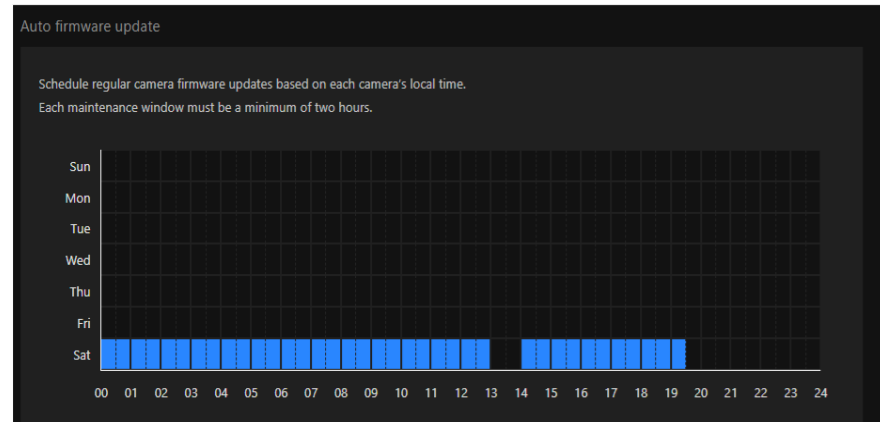
Centralized Device Management

VORTEX direct-to-cloud cameras, or existing cameras via VIVOTEK VSS/Core+AI NVRs, all managed through one cloud interface.



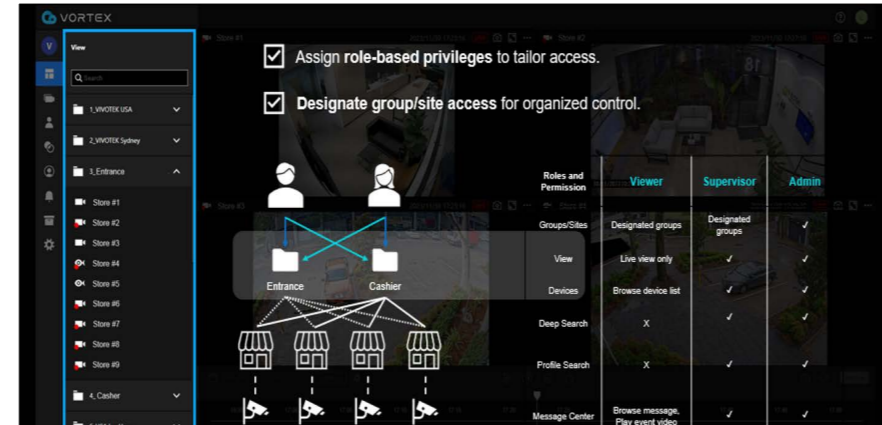
Remote Access and OTA Update

Remote access and over-the-air (OTA) updates for firmware and security patches - speed maintenance and keep systems always up to date.



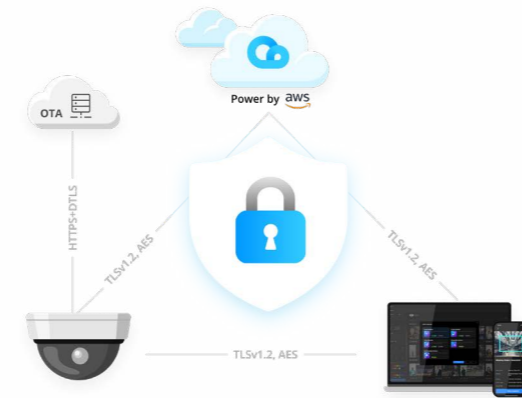
Simplified User Management

Assign role-based privileges to tailor access and designate group/site access for organized control.



Cloud Security & Compliance

Protect enterprise operations with built-in security: ISO 27001-certified cloud infrastructure; SSO & MFA authentication and Role-based user controls.



VORTEX License Tier Three Levels of Security Intelligence

Product Edition	xPro	xStd	xLite
License Overview	AI-driven Automation	Intelligent Operations	Cloud Essential
Max. Users	Unlimited	Unlimited	10
Max. Cameras	Unlimited	Unlimited	128
Max.Site	Unlimited	Unlimited	10
Cloud Archive and Privacy Video Sharing	30GB/ Channel	5GB/ Channel	-
Alarm Management			
Push Notification	✓	✓	✓
Email	✓	✓	-
Webhook	✓	✓	-
AI Features - Real-time Detection			
Built-in AI Detection	Line crossing, Intrusion, Loitering, Unattended object, Missing object	Line crossing, Intrusion, Loitering, Unattended object, Missing object	Line crossing, Intrusion, Loitering, Unattended object, Missing object
Add-on Advanced AI Detection	Personal protective equipment (PPE), Fall, Think Alerts, Facial Recognition, LPR	Personal protective equipment (PPE), Fall, Think Alerts, Facial Recognition, LPR	-
AI Features - Post Search & Management			
AI Hub	Deep Search, Scene Search, Profile Search, Think Search, LPR, Case Vault	-	-
Integration			
3rd Party System	✓	✓	-

PoE Network Products

A full range of products designed for video surveillance systems, including power-surge prevention from lightning strikes, network management, multiple topology views of cameras, and more.



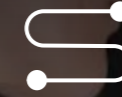
Network & PoE Management

- L2 Network Function
- PoE on/off Control for Each Port
- Cable Diagnostic



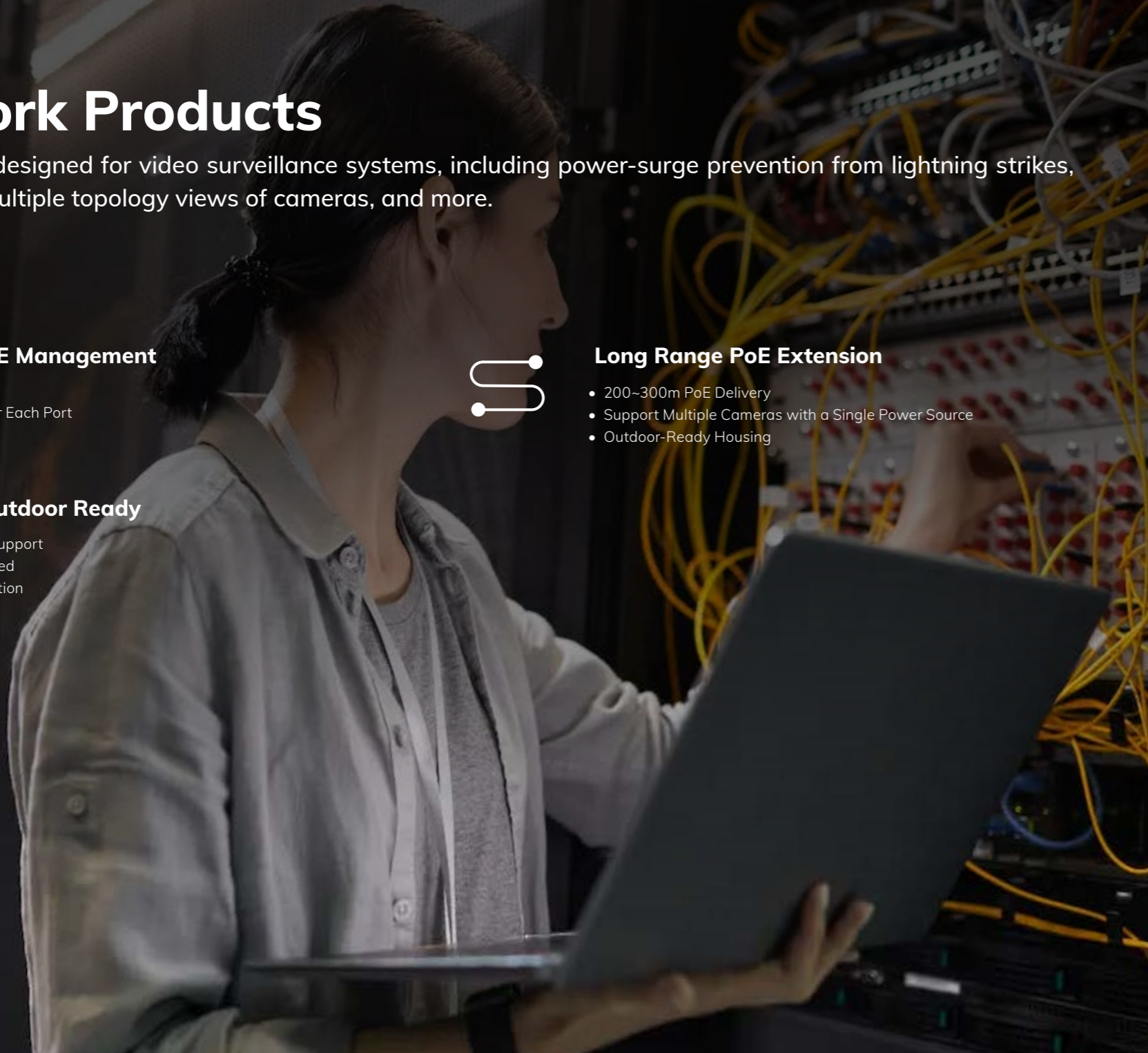
Industrial & Outdoor Ready

- Wide Temperature Support
- IP67 and IK10 Certified
- Built-In Surge Protection

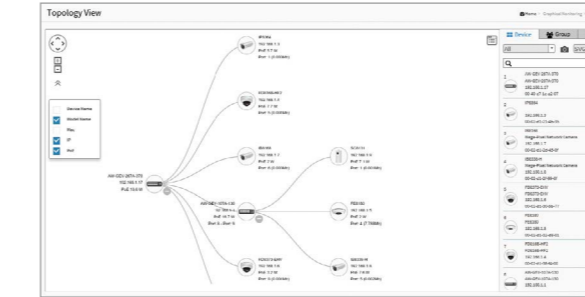


Long Range PoE Extension

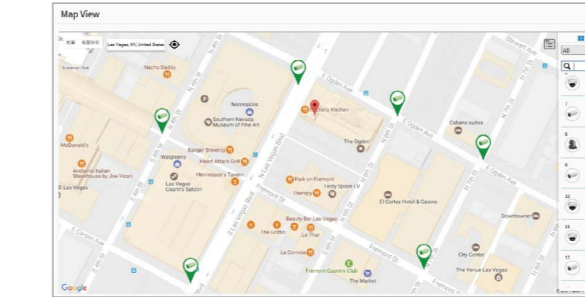
- 200~300m PoE Delivery
- Support Multiple Cameras with a Single Power Source
- Outdoor-Ready Housing



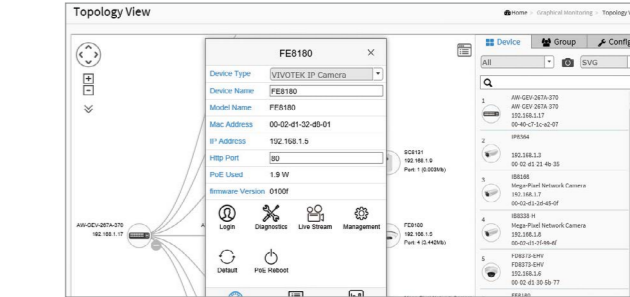
Intuitively Managing IP Surveillance



Topology View



Map View



Device Management

Commercial PoE



Model	AW-GTS-287A
Type	10G L2+ Managed Switch
Ethernet Port	20xGbE SFP + 4xGbE Combo
Uplink Port	4x10G SFP
Console Port	RJ45
Surveillance Feature	Topology View/ Floor View/ Map View
DHCP Server	V
VLAN	802.1Q Tag-based/ Port-based
Spanning Tree Protocol	STP/ RSTP/ MSTP
SNMP (v1, v2c, v3)	V



Model	VORTEX Ready AW-GEV-108A-130	VORTEX Ready AW-GEV-288A-370
Type	VIVOCAM L2 Managed PoE Switch	
PoE port	2xGbE bt 90W PoE + 6xGbE 30W PoE	4xGbE bt 90W PoE + 20xGbE 30W PoE
Uplink Port	2xGbE Combo	4xGbE Combo
Console Port	RJ45	RJ45
PoE Power Budget	130W	370W
Surveillance Feature	Topology View/ Floor View/ Map View	Topology View/ Floor View/ Map View
Extended Mode	250M/10Mbps	250M/ 10Mbps
Non-Stop PoE	V	V
DHCP Server	V	V
VLAN	802.1Q Tag-based/ Port-based	802.1Q Tag-based/ Port-based
Spanning Tree Protocol	STP/ RSTP/ MSTP	STP/RSTP/ MSTP
SNMP (v1, v2c, v3)	V	V

Commercial PoE



Model	VORTEX Ready AW-GEL-065A-060	VORTEX Ready AW-GEL-105A-110	VORTEX Ready AW-GEL-205A-260	VORTEX Ready AW-GEL-285A-380
Type	Lite Managed PoE Switch			
PoE port	4xGbE PoE	2xGbE bt 90W PoE + 6xGbE 30W PoE	4xGbE bt 90W PoE + 12xGbE 30W PoE	4xGbE bt 90W PoE + 20xGbE 30W PoE
Uplink Port	2xGbE RJ45	1xGbE UTP + 1xGbE SFP	2xGbE UTP + 2xGbE SFP	2xGbE UTP + 2xGbE SFP
PoE Power Budget	60W	110W	260W	380W
Extended Mode	250M/ 10Mbps	250M/10Mbps	250M/ 10Mbps	250M/ 10Mbps
Non-Stop PoE	V	V	V	V
VLAN	802.1Q Tag-based/ Port-based	802.1Q Tag-based/ Port-based	802.1Q Tag-based/ Port-based	802.1Q Tag-based/ Port-based
Spanning Tree Protocol	STP/ RSTP	STP/ RSTP	STP/ RSTP	STP/ RSTP
LACP	V	V	V	V



Model	AW-FET-060P-060	AW-FGT-100P-110	AW-FGT-180P-250	AW-FGT-260P-370
Type	Unmanaged FE PoE Switch			
PoE port	4xFE 30W PoE	8xFE 30W PoE	16xFE 30W PoE	24xFE 30W PoE
Uplink Port	2xFE RJ45	2xGbE Combo	2xGbE Combo	2xGbE Combo
PoE Power Budget	60W	110W	250W	370W
Adaptive Extended Mode	4 ports 250/ 10Mbps	8 ports 250M/ 10Mbps	16 ports 250M/ 10Mbps	24 ports 250M/ Mbps
VLAN	V	V	V	V
Video QoS	V	V	V	V
PD Alive	V	V	V	V

Industrial PoE



Model	AW-IHT-1271
Type	Industrial VIVOCAM L2+ Managed PoE Switch
PoE port	8xGbE 30W PoE
Uplink Port	4xGbE SFP
Console Port	RJ45
PoE Power Budget	240W
Operating	-40°C ~ 75°C
Surveillance Feature	Topology View/ Floor View/ Map View
Extended Mode	250M/10Mbps
Non-Stop PoE	V
DHCP Server	V
VLAN	802.1Q Tag-based/ Port-based
Spanning Tree Protocol	STP/ RSTP/ MSTP
SNMP (v1, v2c, v3)	V



Model	AW-IHT-0602	AW-IHT-1002
Type	Industrial M12 PoE Switch	
PoE port	4xM12 D-coded PoE	8xM12 D-coded PoE
Uplink Port	2xM12 D-coded	2xM12 X-coded
PoE Power Budget	120W	165W@24VDC, 190W@48VDC
Operating Temperature	-40°C ~ 75°C	-40°C ~ 75°C
Bypass Relay	-	V



Model	VORTEX Ready AW-IHB-1040
Type	Industrial Lite Managed PoE Switch
PoE port	2xGbE bt 90W PoE + 6xGbE 30W PoE
Uplink Port	2xGbE SFP
PoE Power Budget	300W
Extended Mode	250M/ 10Mbps
Operating Temperature	-40°C ~ 75°C
Non-Stop PoE	V
VLAN	802.1Q Tag-based/ Port-based
Spanning Tree Protocol	STP/ RSTP
LACP	V



Model	AW-IHB-0100
Type	Industrial PoE Injector
Power Input	48~56VDC for 30W 802.3af/at 52~56VDC for 90W 802.3bt
Power Output	1xGbE 90W bt PoE
Operating Temperature	-40°C ~ 75°C

Network Audio

Effective Action for Proactive Deterrence



Audio for Security

Event-triggered audio announcements to improve property security.



Automated Audio Clips

Support broadcasting live announcements or pre-recorded audio clips automatically when VAST Security Station alarm management is triggered.



Loitering Alerts

When a person is loitering beyond a preset time limit, an audio warning can be produced.



Deter Crime and Safeguarding

Prevent financial damage from graffiti, breaking and entering, or other criminal acts through proactive audio alarms.

Network Audio



VORTEX Ready AU-003



VORTEX Ready AU-004

Model	Network Horn Speaker	
Type	Network Horn Speaker	
Product Information		
Rated Impedance	8 ohm	8 ohm
PoE Standard	IEEE 802.3af	IEEE 802.3af
Max. Power Consumption	15W	15W
Max. Sound Pressure Level	113 dB	96 dB
Microphone	50Hz-20kHz at 1Pa 50cm distance SPL 115dB at 1kHz	50Hz-20kHz at 1Pa 50cm distance SPL 115dB at 1kHz
Network		
Supported Protocols	SIP, ONVIF, HTTP, IPv4, DHCP, RTSP, RTP, RTCP, TCP, UDP, ARP, FTP, TFTP, NFS, NTP	
Audio Codec	OPUS 48 kHz, MP3 44.1 kHz, G.722 ADPCM 16 kHz, G.711 PCMU 8 kHz, G.711 PCMA, 8 kHz	
General		
Casing	ABS IP66 water-proof	Metal
Power	PoE, DC 12-24V	PoE, DC 12-24V
Operating Temperature	-30°C ~ 60°C (-22°F ~ 140°F)	-30°C ~ 60°C (-22°F ~ 140°F)
Dimensions	225 x 165 x 240 mm	Ø 200 x 90 mm
Weight	1.3 kg	1 kg
Certifications	CE, FCC, VCCI, BSMI	CE, FCC, VCCI, BSMI

Solution Integration Alliance

The SIA (Solution Integration Alliance) Program is a strategic alliance that aims to facilitate the integration of VIVOTEK products into leading software or hardware platforms. With the SIA Program, partners have the flexibility to enhance key functionalities when creating an IP surveillance solution. The SIA Program provides programmable Software Development Kits (SDK) to allow partners to develop customized features on an open platform, allowing the highest possible level of integration. VIVOTEK also provides technical support throughout the development process.

Find out more about enrolling in the VIVOTEK SIA Program, please email sia@vivotek.com for more information.

Application Partner



Video Management Partner



Hardware Partner



VIVOTEK

A Delta Group Company

Distributed by:



www.vivotek.com

VIVOTEK Inc.

6F, No.192, Liancheng Rd., Zhonghe Dist.,
New Taipei City 235, Taiwan
| T +886-2-82455282 | E sales@vivotek.com

VIVOTEK Japan

〒 108-0023 東京都港区芝浦 4-11-25,
デルタ田町本社ビル 6 階
| T +81-3-5733-1280 | E salesjp@vivotek.com

VIVOTEK USA

2050 Ringwood Avenue, San Jose, CA 95131
| T 408-773-8686 | E salesusa@vivotek.com

VIVOTEK India

602, Best Sky Tower, Plot No. F-5, Netaji Subhash Place,
Pitampura, New Delhi-110034
| T +91-11-45137465 | E salesindia@vivotek.com

VIVOTEK EMEA

Zandsteen 15, 2132 MZ Hoofddorp,
The Netherlands
| T +31(0)20-800-3817 | E saleseurope@vivotek.com

VIVOTEK LATAM

Av. Pdte. Masaryk 101, Piso 10 Oficina 1002, Polanco V Sección,
11560, Miguel Hidalgo, CDMX.
| T +52 55 5531 4184 | E saleslatam@vivotek.com

