

DrayTek

Vigorous Networking Solution for SMEs



DATABOOK
2026

DrayTek

Founded in 1997, DrayTek Corporation is a Taiwan-based manufacturer of networking equipment and management systems. From ISDN, VDSL to LTE, DrayTek has always been striving to provide SMBs and professional with reliable, fast and secure connections. Our mission is to deliver high-quality and high-integrated networking services at an affordable price and be your reliable networking solution partner.



Contents

Router	Broadband	3-5
	xDSL	6-9
	PON	9-10
	Cellular	11-14

Wireless AP	Desktop	15
	Ceiling Mount	16-18
	Outdoor	18

Switch	Unmanaged	19
	Smart Lite	19-20
	Web Smart	20
	L2+ Managed	21-24

Software / Tools	25-26
Accessories	27-28
Feature Matrix	29-38

Vigor2136 Series

2.5G VPN Security Router



Vigor2136 Series offers a dedicated 2.5GbE WAN and a switchable 2.5GbE WAN/LAN port, providing flexible Multi-Gig connectivity. Powered by up to 2.3 Gbps NAT throughput, it maintains stable performance even under strict QoS policies. It is ideal for 4K streaming, online meetings, large file transfers, NAS access, and other business-critical workloads.

- 2.5 Gigabit Ethernet WAN
- 50K NAT Sessions
- 16 Concurrent VPN
- Enhanced Security with IAM

WLAN	
Vigor2136	
Vigor2136ax	●

Vigor2927 Series

Dual-WAN VPN Firewall Router



Vigor2927 Series is a dual-Ethernet WAN firewall router, providing load-balancing and failover for your business continuity. Featuring VPN, QoS, route policy, firewall, content filtering, bandwidth management, captive hotspot portal, and a lot more, this is the ultimate router that does it all for SMB.

- Dual Gigabit Ethernet WANs
- 60K NAT Sessions
- 50 Concurrent VPN

	WLAN	VoIP
Vigor2927		
Vigor2927ac/ax	●	
Vigor2927Vac	●	●

Vigor2928 Series

Dual-WAN VPN Security Router



Vigor2928 series is a Dual-WAN VPN Router with high-speed 10G connectivity through three versatile interfaces. Featuring VPN, QoS, route policy, web content filtering, hotspot web portal, and more. The series includes built-in 802.11be model which offers Wi-Fi 7 feature such as Multi-Link Operation(MLO) and Zero-wait DFS.

- 1/10 Gigabit Ethernet WAN
- 10G SFP+ WAN
- 60K NAT Sessions
- 50 Concurrent VPN

WLAN

Vigor2928

Vigor2928be



Vigor2962

High Performance Multi-WAN Router



Vigor2962 is a high performance and dynamic firewall router with configurable WAN/LAN ports. With the selection of 2.5GbE port, 1GbE Fiber port, and 2 of 1GbE ports, users can set 4 of the ports as WAN for load balancing/failover purpose.

- 3 Ethernet WANs
- 1 GbE/SFP Combo Port
- 300K NAT Sessions
- 200 Concurrent VPN

Vigor3912 Series

10G High-Performance Router

Vigor3912 is designed for bandwidth-demanding networks, featuring a 2GHz Quad-Core CPU for fast connection speed, even with multiple connected devices. The router has 8 WAN interface, including 2x 10G SFP+, 2x 2.5G Ethernet, and 4x 1G Ethernet, providing ultra-fast NAT throughput. Port1 to port8 are configurable independently for WAN or LAN.

Vigor3912 Series can serve as a VPN server to establish LAN-to-LAN or remote dial-in VPN connections. It includes SMB-friendly features like VPN 2FA authentication and VPN from LAN, ensuring a more secure and efficient VPN network.

Vigor3912S comes equipped with 256GB SSD storage inside, supporting Linux applications with Docker. Suricata and VigorConnect are supported.

- 6 Gigabit Ethernet WANs
- 2 10G SFP+ WANs
- 1000K NAT Sessions
- 500 Concurrent VPN
- 8GB RAM (DDR4)

256GB SSD

Vigor3912

Vigor3912S



Vigor166

G.Fast & VDSL2 35b Supervectoring Modem



Vigor166 is a G.fast modem/router, delivering fiber-like DSL speed up to 1 Gbps. The built-in DSL modem is backward compatible with VDSL2 profile 35b supervectoring and ADSL2+. With 1 RJ-11 port and 2 GbE LAN ports, It is also configurable to be a small yet powerful router, offering SPI firewall and content filtering by URL keywords and web features.

- 1 xDSL WAN for G.fast/VDSL2 35b
- Support G.fast
- 2 Gigabit Ethernet LAN
- 10k NAT Sessions

Vigor167

VDSL2 35b Supervectoring Modem



Vigor167 is a VDSL2 35b modem/router. It's equipped with 1 RJ-11 port and 2 GbE LAN ports, and delivers download speed up to 300 Mbps. The built-in DSL modem is backward compatible with ADSL2+. Vigor167 is router/modem (bridge) configurable. Vigor167 also supports TR-069 and can be managed by VigorACS3 for zero-touch deployment and remote management.

- 1 xDSL WAN for VDSL2 35b/ADSL2+
- Support VDSL2 35b
- 2 Gigabit Ethernet LAN
- 10k NAT Sessions

Vigor2766 Series

G.Fast VPN Router



Vigor2766 Series has one G.fast supported DSL WAN, delivering fiber-like link rate up to 1 Gbps, and one configurable Ethernet WAN for backup. The built-in DSL modem is backward compatible with VDSL2 profile 35b supervectoring and ADSL2+. Featuring VPN, QoS, route policy, firewall, content filtering, bandwidth management, captive hotspot portal, and a lot more.

- xDSL or Gigabit Ethernet WAN
- Built-in G.fast/35b/VDSL Modem
- 50k NAT Sessions
- 2 Concurrent VPN

	WLAN	VoIP
Vigor2766		
Vigor2766ac	●	
Vigor2766Vac	●	●

Vigor2767 Series

VDSL2 35b Supervectoring VPN Router



Vigor2767 Series includes a dedicated DSL WAN (VDSL2 35b) and a switchable 2.5GbE WAN/LAN port. With hardware acceleration, it delivers up to 2.3 Gbps aggregate NAT. This flexible connectivity is ideal for business use—online meetings, large file transfers, NAS access, and other business-critical applications.

- xDSL or 2.5 Gigabit Ethernet WAN
- Built-in 35b/VDSL/ADSL Modem
- 50k NAT Sessions
- 16 Concurrent VPN

	WLAN
Vigor2767	
Vigor2767ax	●

Vigor2865 Series

VDSL2 35b Dual-WAN VPN Router



Vigor2865 Series is a VDSL2 35b/ADSL2+ Security Firewall router integrating a DSL modem which is compatible with variants of ADSL and VDSL, including profile 35b supervectoring. There is also a Gigabit Ethernet WAN port for broadband connections to share the traffic load or serve as a failover connection.

- xDSL, Gigabit Ethernet WAN
- Built-in 35b/VDSL/ADSL Modem
- 60k NAT Sessions
- 32 Concurrent VPN

	WLAN	VoIP
Vigor2865		
Vigor2865ac/ax	•	
Vigor2865Vac	•	•

Vigor2866 Series

G.Fast Dual-WAN VPN Router



Vigor2866 Series is a dual WAN firewall router. It has one G.fast supported DSL WAN, delivering fiber-like speed up to 1 Gbps, and one configurable Ethernet WAN. The built-in DSL modem is backward compatible with VDSL2 profile 35b supervectoring and ADSL2+. Vigor2866 Series provides load-balancing and failover for your business continuity. Featuring VPN, QoS, route policy, firewall, content filtering, bandwidth management, captive hotspot portal.

- xDSL, Gigabit Ethernet WAN
- Built-in G.fast/35b/VDSL Modem
- 60k NAT Sessions
- 32 Concurrent VPN

	WLAN	VoIP
Vigor2866		
Vigor2866ac/ax	•	
Vigor2866Vac	•	•

Vigor2867 Series

VDSL2 35b Dual-WAN VPN Router



Vigor2867 series is a VDSL2 35b/ADSL2+ VPN Router with high-speed 10G connectivity. Featuring VPN, QoS, route policy, web content filtering, hotspot web portal, and more. The series includes built-in 802.11be model which offers Wi-Fi 7 feature such as Multi-Link Operation(MLO) and Zero-wait DFS.

- xDSL, 1/10 Gigabit Ethernet WAN
- Built-in 35b/VDSL/ADSL Modem
- 60K NAT Sessions
- 50 Concurrent VPN

WLAN	
Vigor2867	
Vigor2867be	●

Vigor180 Series

XGS-PON Bridge/Router



Vigor180 Series is designed for fiber-to-the-home (FTTH) deployment, featuring a built-in XGS-PON interface for ultra-fast internet access. It comes with one 10GbE and three 1GbE LAN ports, delivering flexible high-speed connectivity for modern homes and offices.

- XGS-PON WAN
- 10k NAT Sessions

VoIP*	
Vigor180	
Vigor180V	●

*project based

Vigor1100Vax

GPON VPN Router



Vigor1100Vax is designed for fulfilling FTTH and triple play service demand of fixed network operators or cable operators. The box is based on the mature Gigabit GPON technology, which have high ratio of performance to price. It supports multi WAN connection of bridge or route, IPv4 and IPv6 protocol stack, multicast protocol, QoS and firewall function.

- GPON or Gigabit Ethernet WAN
- 50k NAT Sessions
- 2 Concurrent VPN
- 2 FXS

Vigor1220 Series

XGS-PON Dual-WAN VPN Router



Vigor1220 series is a XGS-PON VPN Router with high-speed 10G connectivity. Featuring VPN, QoS, route policy, web content filtering, hotspot web portal, and more. The series includes built-in 802.11be model which offers Wi-Fi 7 feature such as Multi-Link Operation(MLO) and Zero-wait DFS.

- XGS-PON, 1/10 Gigabit Ethernet WAN
- 60K NAT Sessions
- 50 Concurrent VPN

WLAN

Vigor1220

Vigor1220be



Vigor2136ax-4G

Cellular VPN Security Router



Vigor2136ax-4G delivers cellular connectivity with multi-profile eSIM* and 2 physical SIM slots. The dedicated 2.5G WAN and switchable 2.5GbE WAN/LAN ports deliver fast wired performance. It is equipped with advanced features such as VPN, QoS, route policy, web content filtering, Identity and Access Management (IAM).

- Cellular, 2.5 Gigabit Ethernet WANs
- Built-in Cellular Modem
- 50K NAT Sessions
- 16 Concurrent VPN

LTE/WCDMA

LTE FDD Band	B1,3,7,8,20,28
LTE TDD Band	B38,40
LTE Category	6
LTE Max. Data Rate	300 Mbps (DL) / 50Mbps (UL)
WCDMA (3G) Band	B1,8

For other band availability, please contact your local DrayTek distributor or us.

Vigor2767ax-4G

Cellular xDSL VPN Router



Vigor2767ax-4G delivers cellular connectivity with multi-profile eSIM and 2 physical SIM slots. The dedicated DSL WAN (VDSL2 35b) and switchable 2.5GbE WAN/LAN ports deliver fast wired performance. It is equipped with advanced features such as VPN, QoS, route policy, web content filtering, Identity and Access Management (IAM).

- Cellular, xDSL or 2.5GbE WAN
- Built-in 35b & Cellular Modem
- 50K NAT Sessions
- 16 Concurrent VPN

LTE/WCDMA

LTE FDD Band	B1,3,7,8,20,28
LTE TDD Band	B38,40
LTE Category	6
LTE Max. Data Rate	300 Mbps (DL) / 50Mbps (UL)
WCDMA (3G) Band	B1,8

For other band availability, please contact your local DrayTek distributor or us.

*future support

Vigor C410/C510 Series

Cellular VPN Security Router



Vigor C510ax



Vigor C410ax

The VigorC410/C510 Series is a high-performance Cellular WAN Security Router. Designed as a primary WAN solution, it is set to operate in "Always On" mode by default, ensuring uninterrupted connectivity for business-critical operations. It is equipped with advanced features such as VPN, QoS, route policy, web content filtering, Identity and Access Management (IAM), hotspot web portal.

- Cellular, Gigabit Ethernet WANs
- Built-in Cellular Modem
- 50K NAT Sessions
- 16 Concurrent VPN

5G/LTE/WCDMA (5G model)

5G Mode	SA/NSA
5G Band	n1,3,7,8,20,28,38,40,77,78
5G Max. Data Rate	NR SA: 2.4Gbps (DL) / 900Mbps (UL) NR NSA: 3.4Gbps (DL) / 550Mbps (UL)
LTE FDD Band	B1,3,7,8,20,28
LTE TDD Band	B38,40
LTE Category	Cat19 (DL) / Cat18 (UL)
LTE Max. Data Rate	1.6Gbps (DL) / 200Mbps (UL)
WCDMA (3G) Band	B1,8

LTE/WCDMA (4G model)

LTE FDD Band	B1,3,7,8,20,28
LTE TDD Band	B38,40
LTE Category	6
LTE Max. Data Rate	300 Mbps (DL) / 50Mbps (UL)
WCDMA (3G) Band	B1,8

For other band availability, please contact your local DrayTek distributor or us.

	WLAN	4G	5G	VoIP*
Vigor C410		•		
Vigor C410ax	•	•		
Vigor C410V		•		•
Vigor C410Vax	•	•		•
Vigor C510		•	•	
Vigor C510ax	•	•	•	
Vigor C510V		•	•	•
Vigor C510Vax	•	•	•	•

*project based

Vigor2865L/2866L Series

Cellular xDSL VPN Router

Vigor2865L/2866L Series is a G.fast (2866L)/VDSL2 35b/ADSL2+ firewall router with 2 embedded SIM card slots (1 SIM online at a time) . There is also a Gigabit Ethernet WAN port for broadband connection. Featuring VPN, QoS, route policy, firewall, content filtering, bandwidth management, hotspot web portal.

- Cellular, xDSL or GbE WAN
- Built-in G.fast (2866L)/35b/VDSL & Cellular Modem
- 60k NAT Sessions
- 32 Concurrent VPN



Vigor2865Lax-5G

5G/LTE/WCDMA (5G model)

5G Band	n1,3,7,8,20,28,38,40,77,78
5G Max. Data Rate	NR SA: 2.4Gbps (DL) / 900Mbps (UL) NR NSA: 3.4Gbps (DL) / 550Mbps (UL)
LTE FDD Band	B1,3,7,8,20,28
LTE TDD Band	B38,40
LTE Category	Cat19 (DL) / Cat18 (UL)
LTE Max. Data Rate	1.6Gbps (DL) / 200Mbps (UL)
WCDMA (3G) Band	B1,8



Vigor2865Lac

LTE/WCDMA (4G model)

LTE FDD Band	B1,3,7,8,20,28
LTE TDD Band	B38,40
LTE Category	6
LTE Max. Data Rate	300 Mbps (DL) / 50Mbps (UL)
WCDMA (3G) Band	B1,8

For other band availability, please contact your local DrayTek distributor or us.

	WLAN	4G	5G
Vigor2865/2866 L		•	
Vigor2865/2866 Lac	•	•	
Vigor2865L-5G		•	•
Vigor2865Lax-5G	•	•	•

Vigor2927L Series

Cellular Dual-WAN VPN Router



Vigor2927Lax-5G

Vigor2927L Series is a dual-Ethernet WAN firewall router with 2 embedded SIM card slots (1 SIM online at a time). Featuring VPN, QoS, route policy, firewall, content filtering, bandwidth management, captive hotspot portal, and a lot more, this is the ultimate router that does it all for SMB.

- Cellular, Dual Gigabit Ethernet WANs
- Built-in Cellular Modem
- 60K NAT Sessions
- 50 Concurrent VPN

5G/LTE/WCDMA (5G model)

5G Band	n1,3,7,8,20,28,38,40,77,78
5G Max. Data Rate	NR SA: 2.4Gbps (DL) / 900Mbps (UL) NR NSA: 3.4Gbps (DL) / 550Mbps (UL)
LTE FDD Band	B1,3,7,8,20,28
LTE TDD Band	B38,40
LTE Category	Cat19 (DL) / Cat18 (UL)
LTE Max. Data Rate	1.6Gbps (DL) / 200Mbps (UL)
WCDMA (3G) Band	B1,8



Vigor2927Lac

LTE/WCDMA (4G model)

LTE FDD Band	B1,3,7,8,20,28
LTE TDD Band	B38,40
LTE Category	6
LTE Max. Data Rate	300 Mbps (DL) / 50Mbps (UL)
WCDMA (3G) Band	B1,8

For other band availability, please contact your local DrayTek distributor or us.

	WLAN	4G	5G
Vigor2927L		•	
Vigor2927Lac	•	•	
Vigor2927L-5G		•	•
Vigor2927Lax-5G	•	•	•

VigorAP 805

AX3000 Dual Band Wi-Fi 6 AP



The VigorAP 805 is a cutting-edge dual-band Wi-Fi 6 access point designed to deliver exceptional wireless performance with a modern aesthetic. With a link rate of 600Mbps on the 2.4GHz band and a 2400Mbps on the 5GHz band, it provides unparalleled connectivity for homes, offices, and high-density environments. Its simple white and cylinder design outer casing makes it look great whether placed on a desk, shelf, or any visible space.

- AX3000 Dual-Band
- Desktop
- 2.5GbE Port

VigorAP 905

2x3 AX3000 Dual Band Wi-Fi 6 AP



VigorAP 905 is 11ax wall-mount/desktop wireless access point with 1x 2.5GbE and 4x 1GbE Ports. With a link rate of 600Mbps on the 2.4GHz band and a 2400Mbps on the 5GHz band, it's suitable for high density environments. It can be cloud-managed by VigorACS, and also act as the mesh Root AP to manage up to 20 devices.

- AX3000 Dual-Band
- Desktop/Wall Mount
- Powered by DC/PoE
- 2.5GbE Port

VigorAP 912C

11ac Dual Band Ceiling-mount AP



VigorAP 912C is a ceiling-mount wireless access point for business networks. It has a capacity of up to 256 concurrent active users, ideal for a high-density environment such as a BYOD workplace. The low-profile appearance and PoE power supply provide the flexibility in deployment.

- AC1200 Dual-Band
- Ceiling/Wall Mount
- Powered by DC/PoE

VigorAP 962C

2x3 AX3000 Dual Band Wi-Fi 6 Ceiling AP



VigorAP 962C is a dual-band Wi-Fi 6 access point that can deliver fast throughput of up to 2.4 Gbps in the 5GHz band and 600 Mbps in the 2.4GHz band. This access point can support 256 concurrent clients while providing excellent and reliable wireless connectivity. With mesh network support, you can wirelessly extend the Wi-Fi coverage for more flexibility.

- AX3000 Dual-Band
- Ceiling/Wall Mount
- Powered by DC/PoE
- 2.5GbE Port

VigorAP 1070C

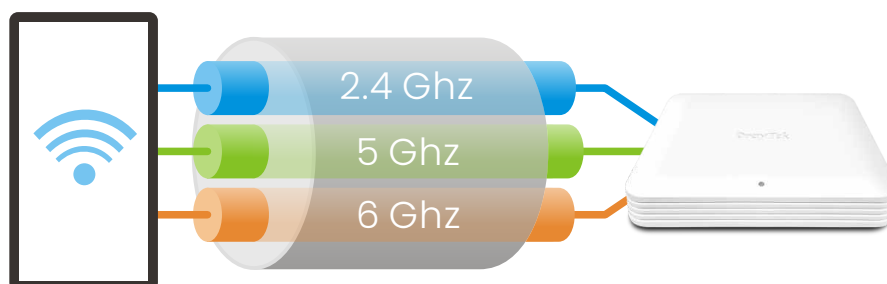
4x4 BE19000 Tri-Band Wi-Fi 7 Ceiling AP

VigorAP 1070C is a tri-band Wi-Fi 7 access point. Designed for high-density business environments, it supports up to 512 wireless clients and delivers strong throughput, stable coverage, and scalable deployment for offices, classrooms, and campuses. With Multi-Link Operation (MLO), together with OFDMA and MU-MIMO, the AP maximizes spectrum efficiency.

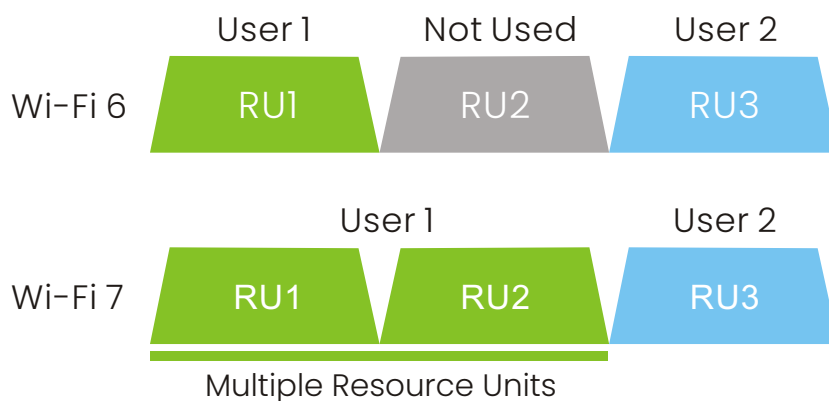


- BE19000 Tri-Band
- Ceiling Mount
- Powered by DC/PoE
- 10/2.5GbE Port

Multi-link Operation



Enhanced OFDMA



VigorAP 1062C

4x4 AX6000 Dual Band Wi-Fi 6 Ceiling AP



VigorAP 1062C is a high performance dual-band Wi-Fi 6 Access Point, delivering 1.2Gbps in 2.4GHz and 4.8Gbps* in 5GHz. With its 2.5GbE port and MU-MIMO technology, it can support up to 256 concurrent clients, making it a perfect choice in high-speed and high-density environments.

- AX6000 Dual-Band
- Ceiling Mount
- Powered by DC/PoE
- 2.5GbE Port

*5G maximum wireless speeds may vary depending on regional limitations.

Outdoor

VigorAP 918R Series

11ac Wave 2 Dual-Band PoE Outdoor AP



DrayTek VigorAP 918R Series is a compact outdoor wireless access point. The series includes an RPD model, which is equipped with a PoE-Out port to deliver connectivity and power to another network device, such as an IP camera, and the internal 5GHz directional patch antenna can enhance the wireless performance for long-range point-to-point connection.

- AC1300 Dual-Band
- Pole/Wall Mount
- Powered by PoE
- IP67 Rated Waterproof

	PoE Out	Directional Antenna
VigorAP 918R		
VigorAP 918R PD	●	●

VigorSwitch Q60x

2.5GbE/10G SFP+ Multi-Gig Unmanaged Switch

VigorSwitch Q60x comes with 5x 2.5GbE ports for reliable network connectivity. No configuration is needed, just connect more devices to easily and cost-efficiently expand your network. The switch is energy efficient, with a power consumption of only 4.85 watts, and its metal case design enhances heat dissipation.

- 5x 2.5GbE Ports
- 1x 10G Fiber SFP+
- 45G Switching Capacity



Smart Lite

VigorSwitch G1080

8-Port Smart Lite Managed Gigabit Switch

DrayTek VigorSwitch G1080 is an extremely compact 8-port smart lite Gigabit switch. It provides basic management including 802.1q VLAN, 802.1p CoS QoS, Link Aggregation, Storm Control, and Loop Prevention. Perfect for Smart home/SOHO with needs of network efficiency and security.

- 8 GbE Ports
- Smart Lite
- 16G Switching Capacity



VigorSwitch PQ1070x/Q1070x

Smart Lite 2.5GbE Switch

VigorSwitch Q1070x series features 2.5GbE ports for LAN and 10G SFP+ for uplink/downlink. Supporting 802.1q VLAN, Link Aggregation, Storm Control, and Loop Prevention. The PoE model PQ1070x has 5x 2.5GbE PoE+ ports with 75W power budget.

- 5x 2.5GbE Ports
- 2x 10G Fiber SFP+
- 65G Switching Capacity



VigorSwitch PQ1100x/Q1100x

Smart Lite 2.5GbE Switch

VigorSwitch Q1100x series features 2.5GbE ports for LAN and 10G SFP+ for uplink/downlink. Supporting 802.1q VLAN, Link Aggregation, Storm Control, and Loop Prevention. The PoE model PQ1100x has 8x 2.5GbE PoE+ ports with 120W power budget. Perfect for Smart home/SOHO with needs of network efficiency and security.

- 8x 2.5GbE Ports
- 2x 10G Fiber SFP+
- 80G Switching Capacity



Web Smart

VigorSwitch G1282/P1282/P1281x

Web Smart Gigabit Switch

VigorSwitch G1282/P1282/P1281x is a Web Smart Gigabit switch that brings network security and stability into mid-sized environments. Equipped with enterprise-level features, including IP Conflict Detection & Prevention, ONVIF Surveillance, and ping watchdog. The PoE models have 24 GbE PoE+ ports with 140W (P1281x), 400W (P1282) power budget.

- Web Smart
- 56G Switching Capacity
- 1U Rackmount



VigorSwitch PX2060/X2060

L2+ Managed 10GbE Switch

VigorSwitch PX2060/X2060 is a full 10 Gigabit switch with 4x 10GbE ports for LAN and 2x 10G SFP+ for uplink/downlink. Featuring Layer 3 features, including DHCP Server and VLAN Routing. Furthermore with IP Conflict Detection & Prevention, ONVIF Surveillance. The PoE model PX2060 has 4x 10G PoE++ ports with 140W power budget. Perfect for Smart home/SOHO with needs of network efficiency and security.

- L2+ Managed
- 160G Switching Capacity
- 1U Rackmount



VigorSwitch P2100

L2+ Managed Switch

VigorSwitch P2100 is a compact Layer 2+ Managed Gigabit switch for smart home and branch/remote sites. It has 2 SFP ports, 8 GbE PoE+ ports with 140W power budget. Featuring Layer 3 features, including DHCP Server and VLAN Routing. Furthermore with IP Conflict Detection & Prevention, ONVIF Surveillance, ping watchdog and a lot more.

- L2+ Managed
- 20G Switching Capacity
- 1U Rackmount



VigorSwitch FX2120

L2+ Managed Switch

VigorSwitch FX2120 is a full 10 Gigabit switch with 12x SFP+ ports for uplink/downlink and 1x console port. It is well-suited for ISP and enterprise network with intensive data transmission. Supporting OpenFlow 1.3, it's also a future-proofed switch that can be operating in either traditional switch or SDN switch mode. It improves local network sustainability and efficiency regardless of the gateway. Furthermore, with IP Conflict Detection & Prevention, ONVIF Surveillance, ping watchdog, and a lot more.

- L2+ Managed
- 240G Switching Capacity
- 1U Rackmount



VigorSwitch PQ2121x/Q2121x

L2+ Managed 2.5GbE Switch

VigorSwitch Q2121x/PQ2121x features 2.5GbE ports for LAN and 10G SFP+ for uplink/downlink. Together with Wi-Fi 6 VigorAPs (e.g., VigorAP 1062C), it brings the full Wi-Fi 6 performance to LAN clients. Supporting advanced Layer 3 features, DHCP Server, and VLAN Routing. The PoE model PQ2121x has 8x 2.5GbE PoE+ ports with 140W power budget.

- L2+ Managed
- 120G Switching Capacity
- 1U Rackmount



VigorSwitch PQ2200x/Q2200xb

L2+ Managed 2.5GbE Switch

VigorSwitch Q2200x series features 16x 2.5GbE ports for LAN and 4x 10G SFP+ for uplink/downlink. Supporting advanced Layer 3 features, DHCP Server, and VLAN Routing, it improves network efficiency and ensures your LAN network continues functioning, making it an ideal core switch for SMEs/SMBs. The PoE model PQ2200xb has 4 PoE++ and 12 PoE+ ports with 400W power budget.

- L2+ Managed
- 160G Switching Capacity
- 1U Rackmount



VigorSwitch G2282x/P2282x

L2+ Managed Switch

VigorSwitch G2282x series is a Layer 2+ Managed 10 Gbps switch. It has 24 GbE LAN ports and 4 SFP+ 10Gbps Fiber links for uplink/downlink. Supporting advanced Layer 3 features, including DHCP Server and VLAN Routing. The PoE model P2282x has 24 GbE PoE+ ports with 400W power budget.

- L2+ Managed
- 128G Switching Capacity
- Backup DC Power Input
- Stacking Support



VigorSwitch PQ2300x/Q2300xb

L2+ Managed 2.5GbE Switch

VigorSwitch Q2300x series features 24x 2.5GbE ports for LAN and 6x 10G SFP+ for uplink/downlink. Supporting advanced Layer 3 features, DHCP Server, and VLAN Routing, it improves network efficiency and ensures your LAN network continues functioning, making it an ideal core switch for SMEs/SMBs. The PoE model PQ2300xb has 8 PoE++ and 16 PoE+ ports with 400W power budget.

- L2+ Managed
- 240G Switching Capacity
- Backup DC Power Input
- Stacking Support



VigorSwitch G2542x/P2542x/P2542xh

L2+ Managed Switch

VigorSwitch 2542x series is a Layer 2+ Managed switch with 48 GbE ports and 6 x SFP+ 10Gbps Fiber links. Supporting advanced Layer 3 features, DHCP Server and VLAN Routing. Moreover, it supports VLAN routing to route the inter-VLAN traffic directly. The PoE models have 48 GbE PoE+ ports with 400W (P2542x), 720W (P2542xh) power budget.

- L2+ Managed
- 216G Switching Capacity
- Stacking Support

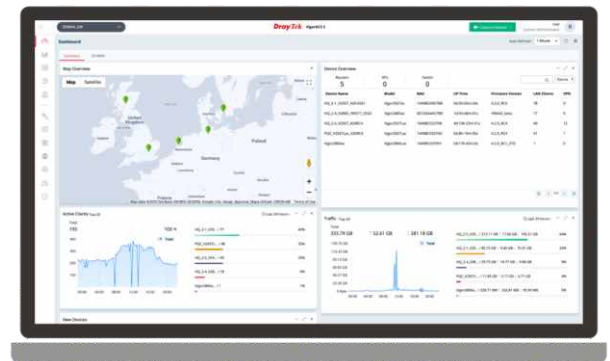


VigorACS 3

NMS for Vigor Devices






VigorACS 3 is the latest version of DrayTek's Network Management System (NMS). It supports all current DrayTek routers, access points, and switches, providing a integrated platform for configuration, monitoring and management.

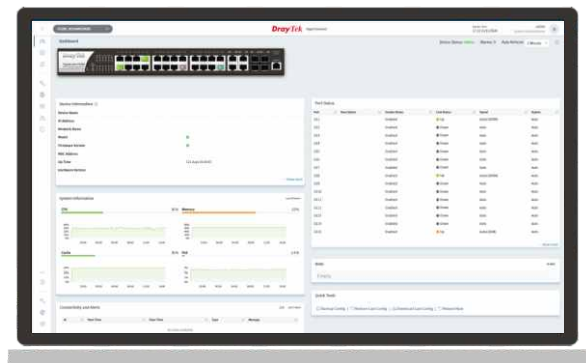
VigorACS 3 is also the core of the DrayTek SD-WAN solution. It's the central software where Network Administrator can perform configuration, provisioning, and monitoring to the edge routers.



VigorConnect

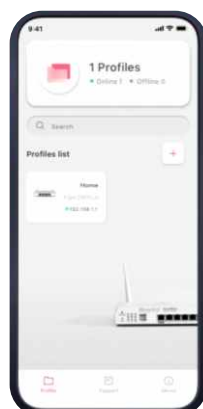
Local Network Management Software for DrayTek Devices

-  Discovery
-  Provisioning
-  Monitoring
-  Visibility
-  Scheduled Maintenance



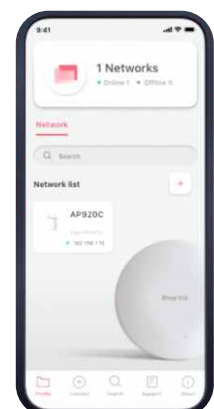
DrayTek Router App

- Work with Vigor Router Series
- Setup major Router functions
- Parental control by content/time



DrayTek Wireless App

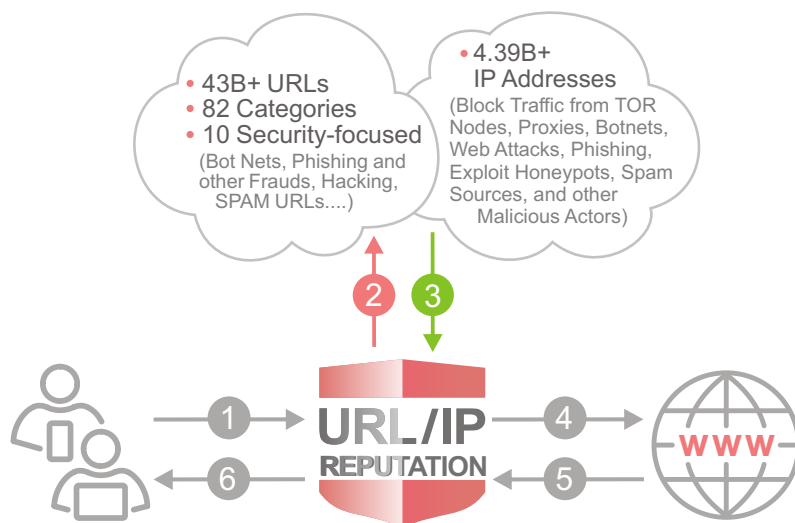
- Work with VigorAP Series
- Setup Mesh/Wi-Fi
- Parental control by time



URL/IP Reputation

Threat Intelligence Service

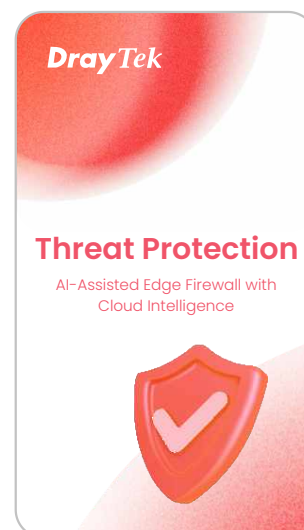
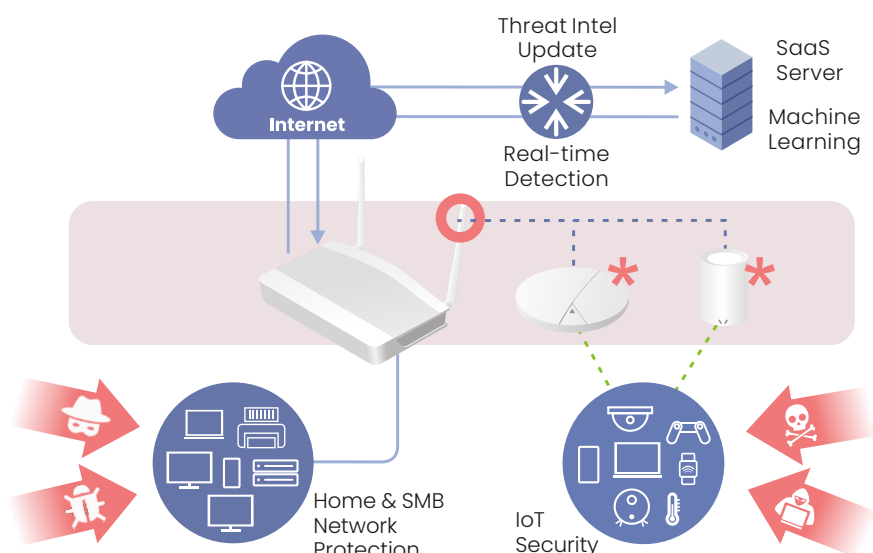
Strengthen your network security by classifying URLs and IPs, enabling precise access control and protection against web-based threats.



Threat Protection

AI-Assisted Edge Firewall with Cloud Intelligence

DrayTek Threat Protection is an AI-assisted, cloud-based security service integrated into selected DrayTek Vigor routers. It delivers edge-level protection for the router, local network, and all connected devices—purpose-built for modern SMB environments. By combining gateway-based enforcement, behavior-driven analysis, and cloud intelligence, DrayTek Threat Protection provides advanced security.



VigorPoE600

PoE Injector

VigorPoE 600 is a single-port passive PoE injector that delivers both power and data to connected PoE devices through a single cable. It can work with all DrayTek PoE compliant PDs, such as IP Cameras, Access Points, and others. The total power output can reach up to 60.5 watts, especially suitable for advanced PD like VigorAP920RPD or Vigor918RPD which consumes more power.



ANT-1205

2.4G/5G Indoor High-Gain Omni-Directional Antenna

DrayTek ANT-1205 is a dual-band antenna, can be a replacement antenna for VigorRouter or VigorAP. The ANT-1205 is compatible with 802.11a/b/g/n/ac standards, and 802.11 ax (Wi-Fi 6) to provide faster wireless throughput and enhance Wi-Fi performance in both 2.4G/5G. ANT-1205 is supplied in pair and available in black or white color, you can purchase the needed amount according to your Router/AP devices.



Rack Mount Bracket

Standard 19" 1U Rack Mount Kit for Vigor Routers

The rack mount brackets is used for mounting the router onto a 19" standard rack.



DAC-CX10

10G SFP+ Direct Attach Passive Copper Cable

DAC-CX10 is designed for providing high-speed data link via copper wire and support both Gigabit and 10 Gigabit Ethernet data rate, compatible to SFP+ MSA to meet Fiber Channel industry standard requirements to ensure performance and reliability.

It is available in 2 models, **DAC-CX10-1m** (Length:1m) and **DAC-CX10-3m** (Length:3m).



DAM-FX10-20K Series

10G SFP+ Module

DAM-FX10-20K Series is an SFP+ Optical single transceiver. It is a small form-factor pluggable transceiver and is designed for use in 10 Gigabit Ethernet connection for a distance of up to 20km over a single SFP+ Module.

DAM-FX10-20K Series provides a high-performance and cost-effective solution, which is ideal for long-distance fiber connectivity. It is available in 2 types, **DAM-FX10-20K-A** (Type A) and **DAM-FX10-20K-B** (Type B).



DAM-EX10-30m

10G Base-T RJ45 SFP+ Module

DAM-EX10-30m transceiver is a compact pluggable SFP+ transceiver that supports multiple connectivity options, including 1G BASE-T, 2.5G BASE-T, 5G BASE-T, and 10G BASE-T. Its Hot-Pluggable SFP+ Footprint feature ensures easy installation. This transceiver is suitable for distances up to 30 meters over Cat 5e/Cat 6a copper cables via RJ-45 connector, providing a cost-effective solution for enterprises to establish connections within racks or other copper interfaces.



Broadband Router

		Vigor2136 series		Vigor2927 series				Vigor2928 series	
		2136	2136ax	2927	2927ac	2927Vac	2927ax	2928	2928be
WAN	Fixed WAN	1 x 2.5GbE		1 x GbE				1 x GbE + 1 x SFP+	
	Switchable WAN/LAN	1 x 2.5GbE		1 x GbE				1 x 10GbE	
LAN	Fixed LAN	3 x GbE		5 x GbE				3 x GbE + 1 x 2.5GbE + 1 x SFP+	
	LAN Subnet	4		8				8	
	DMZ Port			1					
USB Port		2		2				2	
WLAN	Standard		11a/b/g/n/ac wave 2/ax		11a/b/g/n/ac wave 2	11a/b/g/n/ac wave 2/ax			11a/b/g/n/ac wave 2/ax/be
	2.4GHz		•		•				•
	5GHz		•		•				•
	Mesh		•		•				•
VPN	Max. VPN	16		50				50	
	Max. SSL VPN			25					
	VPN Matcher			•					
Routing	Static Route	•		•				•	
	Policy Route	•		•				•	
	RIP	•		•				•	
	BGP	•		•				•	
	OSPF	•						•	
Content Filter	APP, Web Category, DNS Keyword	•		•				•	
	URL Keyword	•		•				•	
NAT Sessions		50K		60K				60K	
Bandwidth Management		•		•				•	
DrayDDNS		•		•				•	
VoIP					•				
VPN Management				8					
AP Management		20		20				20	
Switch Management		5		10				5	

PON Router

Vigor2962	Vigor3912 series
2962	3912/S
1x 25GbE + 2x GbE + 1x GbE/SFP Combo	2x 25GbE + 4x GbE + 2x SFP+
2 x GbE	4 x GbE
20	100
2	2
200	500
50	200
•	•
•	•
•	•
•	•
•	•
•	•
•	•
•	•
•	•
300K	1000K
•	•
•	•
50	50
30	30

Vigor180 series	Vigor1100 series	Vigor1220 series	
180	1100Vax	1220	1220be
1 x XGS-PON	1 x GPON	1 x GbE + 1 x XGS-PON	
	1 x GbE	1 x 10GbE	
3 x GbE + 1 x 10GbE	3 x GbE	3 x GbE + 1 x 2.5GbE + 1 x SFP+	
1	4	8	
		2	
	11a/b/g/n/ ac wave 2/ax		11a/b/g/n/ ac wave 2/ax/be
	•		•
	•		•
			•
	2	50	
•	•	•	
	•	•	
	•	•	
	•	•	
	•	•	
	•	•	
	•	•	
10K	50K	60K	
	•	•	
	•	•	
	•		
		20	
		5	

xDSL Router

		Vigor160 series		Vigor2766 series			Vigor2767 series	
		166	167	2766	2766ac	2766Vac	2767	2767ax
WAN	Fixed WAN Port	1 x ADSL/VDSL /35b/G.Fast	1 x ADSL/VDSL /35b	1 x ADSL/VDSL/35b/G.Fast			1 x ADSL/VDSL/35b	
	WAN/LAN Switchable Port			1 x GbE			1 x 25GbE	
LAN	Fixed LAN Port	2 x GbE		3 x GbE			3 x GbE	
	LAN Subnet	1		4			4	
	DMZ Port							
USB Port				2			2	
WLAN	Standard				11a/b/g/n/ ac wave 2			11a/b/g/n/ ac wave 2/ax
	2.4GHz				●			●
	5GHz				●			●
	Mesh				●			●
VPN	Max. VPN			2			16	
	Max. SSL VPN			2				
	VPN Matcher			●				
Routing	Static Route	●		●			●	
	Policy Route			●			●	
	RIP	●		●			●	
	BGP						●	
	OSPF						●	
Content Filter	APP, Web Category, DNS Keyword			●			●	
	URL Keyword	●		●			●	
NAT Sessions		10K		50K			50K	
Bandwidth Management				●			●	
DrayDDNS				●			●	
VoIP						●		
VPN Management								
AP Management				2			20	
Switch Management							5	

Vigor2865 series				Vigor2866 series				Vigor2867 series	
2865	2865ac	2865Vac	2865ax	2866	2866ac	2866Vac	2866ax	2867	2867be
1 x ADSL/VDSL/35b				1 x ADSL/VDSL/35b/G.Fast				1 x GbE + 1 x ADSL/VDSL/35b	
1 x GbE				1 x GbE				1 x 10GbE	
5 x GbE				5 x GbE				3 x GbE + 1 x 2.5GbE + 1 x SFP+	
8				8				8	
1				1					
2				2				2	
	11a/b/g/n/ ac wave 2		11a/b/g/n/ ac wave 2/ax		11a/b/g/n/ ac wave 2		11a/b/g/n/ ac wave 2/ax		11a/b/g/n/ ac wave 2/ax/be
	●				●				●
	●				●				●
	●				●				●
32				32				50	
16				16					
●				●					
●				●				●	
●				●				●	
●				●				●	
●				●				●	
●				●				●	
●				●				●	
60K				60K				60K	
●				●				●	
●				●				●	
	●				●				
8				8					
20				20				20	
10				10				5	

Cellular Router

		Vigor2136ax-4G	Vigor2767ax-4G	Vigor C410 series		Vigor C510 series	
		2136ax-4G	2767ax-4G	C410	C410ax	C510	C510ax
WAN	Fixed WAN Port	1 x 2.5GbE + 1 x Cellular	1 x ADSL/VDSL/35b + 1 x Cellular	1 x GbE + 1 x Cellular		1 x GbE + 1 x Cellular	
	WAN/LAN Switchable Port	1 x 2.5GbE	1 x 2.5GbE	1 x GbE		1 x GbE	
LAN	Fixed LAN Port	3 x GbE	3 x GbE	4 x GbE		3 x GbE	
	LAN Subnet	4	4	4		4	
	DMZ Port						
USB Port		1	1				
WLAN	Standard	11a/b/g/n/ ac wave 2/ax	11a/b/g/n/ ac wave 2/ax		11a/b/g/n/ ac wave 2/ax		11a/b/g/n/ ac wave 2/ax
	2.4GHz	•	•		•		•
	5GHz	•	•		•		•
	Mesh	•	•				
VPN	Max. VPN	16	16	16		16	
	Max. SSL VPN						
	VPN Matcher						
Routing	Static Route	•	•	•		•	
	Policy Route	•	•	•		•	
	RIP	•	•	•		•	
	BGP	•	•	•		•	
	OSPF	•	•	•		•	
Content Filter	APP, Web Category, DNS Keyword	•	•	•		•	
	URL Keyword	•	•	•		•	
NAT Sessions		50K	50K	50K		50K	
Bandwidth Management		•	•	•		•	
DrayDDNS		•	•	•		•	
VoIP							
VPN Management							
AP Management		20	20	20		20	
Switch Management		5	5	5		5	

Vigor2865L series				Vigor2866L series		Vigor2927L series			
2865L	2865Lac	2865L-5G	2865Lax-5G	2866L	2866Lac	2927L	2927Lac	2927L-5G	2927Lax-5G
1 x ADSL/VDSL/35b + 1 x Cellular				1 x ADSL/VDSL/35b/ G.Fast + 1 x Cellular		1 x GbE + 1 x Cellular			
1 x GbE				1 x GbE		1 x GbE			
5 x GbE				5 x GbE		5 x GbE			
8				8		8			
1				1		1			
1				1		1			
	11a/b/g/n/ ac wave 2		11a/b/g/n/ ac wave 2/ax		11a/b/g/n/ ac wave 2		11a/b/g/n/ ac wave 2		11a/b/g/n/ ac wave 2/ax
	•		•		•		•		•
	•		•		•		•		•
	•		•		•		•		•
32				32		50			
16				16		25			
•				•		•			
•				•		•			
•				•		•			
•				•		•			
•				•		•			
•				•		•			
•				•		•			
•				•		•			
60K				60K		60K			
•				•		•			
•				•		•			
•				•		•			
8				8		8			
20				20		20			
10				10		10			

Access Point

		AP805	AP905	AP912C	AP962C	AP1062C	AP1070C	AP918R	AP918RPD
Band	2.4GHz	•	•	•	•	•	•	•	•
	5GHz	•	•	•	•	•	•	•	•
	6GHz						•		
Max. Link Rate (Mbps)		600+2400	600+2400	300 + 867	600+2400	1200 + 4800	1376 + 5765 + 11530	400 + 867	400 + 867
Max. Clients		256	256	256	256	256	512	256	256
Wi-Fi 6		•	•		•	•	•		
Wi-Fi 7							•		
Max. Number of SSID (per band)		16 (8)	16 (8)	8 (4)	16 (8)	16 (8)	24 (8)	8 (4)	8 (4)
AirTime Fairness		•	•	•	•	•	•	•	•
Band Steering		•	•	•	•	•	•	•	•
Built-in RADIUS Server				•				•	•
Hotspot Web Portal				•				•	•
802.1q tag-based VLAN		•	•	•	•	•	•	•	•
Port	GbE	1	4	1				1	2
	2.5GbE	1	1		1	1	1		
	10GbE						1		
USB Port			1				1		
Mounting (Desktop/Wall/Ceiling/Pole)		D	D/W	C/W	C/W	C	C	P/W	P/W
Power via		DC	DC / PoE	DC / PoE	DC / PoE	DC / PoE	DC / PoE	PoE	PoE
PoE Input			•	•	•	•	•	•	•
PoE Output									•
Mesh		Root, Node	Root, Node	Root, Node	Root, Node	Root, Node	Root, Node	Root, Node	Root, Node
Central AP Mgmt.		20	20	20	20	50	50		

Switch

		Unmanaged	Smart Lite					Web Smart		
		Q60x	G1080	PQ1070x	Q1070x	PQ1100x	Q1100x	G1282	P1282	P1281x
Ports	RJ-45	5 x 2.5GbE	8 x GbE	5 x 2.5GbE	5 x 2.5GbE	8 x 2.5GbE	8 x 2.5GbE	24 x GbE	24 x GbE	24 x GbE
	SFP	1 (SFP+)		2 (SFP+)	2 (SFP+)	2 (SFP+)	2 (SFP+)			4 (SFP+)
	SFP/GbE Combo							4	4	
	Console									
PoE	Ports			5 PoE+		8 PoE+			24 PoE+	24 PoE+
	Power Budget (watts)			75		120			400	140
LAN	Spanning Tree			STP, RSTP		STP, RSTP		STP, RSTP		
	ONVIF Surveillance							•	•	•
VLAN	Tag-Based		•	•	•	•	•	•	•	•
	MAC-Based							•	•	•
	Voice & Surveillance VLAN							•	•	•
	GVRP									
	QinQ (Basic)									
Layer3 Features	Static Route									
	VLAN Route									
	DHCP Server									
Multicast	IGMP Snooping		v2	v2		v2		v2, v3(BISS)		
	IGMP Querier							•	•	•
QoS	Number of QoS Queues		4	7	7	7	7	8	8	8
	Rate Limiting		•	•	•	•	•	•	•	•
Security	IP Conflict Prevention							•	•	•
	IPSG							•	•	•
	Access Control							•	•	•
	DAI									
Management	sFlow									
	SNMP							v1/v2c/v3		
	LLDP			•	•	•	•	•	•	•
	SWM		•					•	•	•

Switch

		L2+ Managed					
		PX2060	X2060	P2100	FX2120	PQ2121x	Q2121x
Ports	RJ-45	4 x 10GbE	4 x 10GbE	8 x GbE		8 x 2.5GbE	8 x 2.5GbE
	SFP	2 (SFP+)	2 (SFP+)	2	12 (SFP+)	4 (SFP+)	4 (SFP+)
	SFP/GbE Combo						
	Console			•	•	•	•
PoE	Ports		4 PoE++	8 PoE+		8 PoE+	
	Power Budget (watts)		140	140		140	
LAN	Spanning Tree	STP, RSTP, MSTP		STP, RSTP, MSTP	STP, RSTP, MSTP	STP, RSTP, MSTP	
	ONVIF Surveillance	•	•	•	•	•	•
VLAN	Tag-Based	•	•	•	•	•	•
	MAC-Based	•	•	•	•	•	•
	Voice & Surveillance VLAN	•	•	•	•	•	•
	GVRP	•	•	•	•	•	•
	QinQ (Basic)	•	•	•	•	•	•
Layer3 Features	Static Route	•	•	•	•	•	•
	VLAN Route	•	•	•	•	•	•
	DHCP Server	•	•	•	•	•	•
Multicast	IGMP Snooping	v2, v3(BISS)		v2, v3 (BISS)	v2, v3 (BISS)	v2, v3(BISS)	
	IGMP Querier	•	•	•	•	•	•
QoS	Number of QoS Queues	8	8	8	8	8	8
	Rate Limiting	•	•	•	•	•	•
Security	IP Conflict Prevention	•	•	•	•	•	•
	IPSG	•	•	•	•	•	•
	Access Control	•	•	•	•	•	•
	DAI	•	•	•	•	•	•
Management	sFlow	•	•		•	•	•
	SNMP	v1/v2c/v3		v1/v2c/v3	v1/v2c/v3	v1/v2c/v3	
	LLDP	•	•	•	•	•	•
	SWM	•	•	•	•	•	•

L2+ Managed							
PQ2200xb	Q2200x	G2282x	P2282x	PQ2300xb	Q2300x	G2542x	P2542x/xh
16 x 2.5GbE	16 x 2.5GbE	24 x GbE	24 x GbE	24 x 2.5GbE	24 x 2.5GbE	48 x GbE	48 x GbE
4 (SFP+)	4 (SFP+)	4 (SFP+)	4 (SFP+)	6 (SFP+)	6 (SFP+)	6 (SFP+)	6 (SFP+)
•	•	•	•	•	•	•	•
4 PoE++ & 12 PoE+			24 PoE+	8 PoE++ & 16 PoE+			48 PoE+
400			400	400			400/720
STP, RSTP, MSTP		STP, RSTP, MSTP		STP, RSTP, MSTP		STP, RSTP, MSTP	
•	•	•	•	•	•	•	•
•	•	•	•	•	•	•	•
•	•	•	•	•	•	•	•
•	•	•	•	•	•	•	•
•	•	•	•	•	•	•	•
•	•	•	•	•	•	•	•
•	•	•	•	•	•	•	•
•	•	•	•	•	•	•	•
•	•	•	•	•	•	•	•
v2, v3(BISS)		v2, v3(BISS)		v2, v3(BISS)		v2, v3(BISS)	
•	•	•	•	•	•	•	•
8	8	8	8	8	8	8	8
•	•	•	•	•	•	•	•
•	•	•	•	•	•	•	•
•	•	•	•	•	•	•	•
•	•	•	•	•	•	•	•
•	•	•	•	•	•	•	•
•	•	•	•	•	•	•	•
v1/v2c/v3		v1/v2c/v3		v1/v2c/v3		v1/v2c/v3	
•	•	•	•	•	•	•	•
•	•	•	•	•	•	•	•

DrayTek

www.draytek.com

Tel: +886-3-5972727 Fax: +886-3-5972121 E-mail: info@draytek.com

Trademarks and brand names are the properties of their respective owners.

The scope of delivery and other details are subject to change without prior notice.

Copyrights © DrayTek Corp. All right reserved.